

SAMPLES AND DECORS

vzorky a dekory

Worktops / pracovní desky

Compact laminates worktops / kompaktní desky	3
HPL postforming worktops / postformingové desky	4
Solid worktops / desky z minerálního kamene	7
Ceramic worktops / desky z velkoformátové keramiky	12
Quartz stone worktops / desky z technického kamene	14
Natural stone worktops / žulové desky	17

Front surfaces / přední plochy

High gloss UNI color / lesklé UNI barvy	18
Matte UNI color / matné UNI barvy	19
Standard UNI color / standardní UNI barvy	21
Wood decors / dřevodekory	25

Splashback / obklad stěn

Tempered glass with ceramic print Kerglass splashback / zástěny z kaleného skla s keramickým potiskem Kerglass.....	26
Glass Lacobel splashback / skleněné zástěny Lacobel	28
Compact laminates splashback / zástěny z kompaktních desek	29

Accessories / příslušenství

Handles / úchytky	30
Dental inserts / zásuvkové vložky	38

Symbols / symboly



High gloss finish
vysoký lesk



Extremely matt surface
extrémně matný povrch



Soft touch
příjemný na dotek



Anti-fingerprint
nezanechává otisky prstů



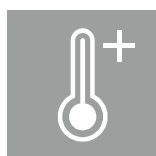
Low swelling
odolné proti vlhkosti



High scratch resistance
vysoká odolnost proti poškrábání



Easy care
snadná údržba



High temperature resistance
odolnost proti vysokým teplotám



Chemical resistance
chemická odolnost



High impact resistance
odolnost proti nárazu



Ultra high gloss finish
extrémně vysoký lesk

Colours of the samples may vary due to monitor settings.

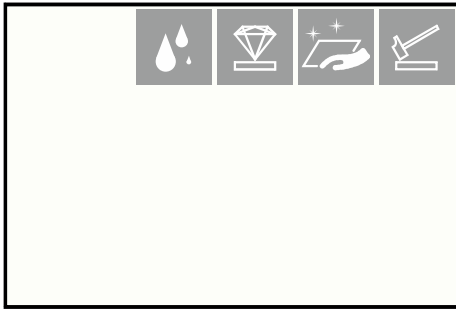
Special laminates and special colours can be ordered but delivery time may be longer. For the latest version of this brochure please visit our website.

Barvy vzorků v této brožurě se mohou lišit v závislosti na nastavení monitoru.

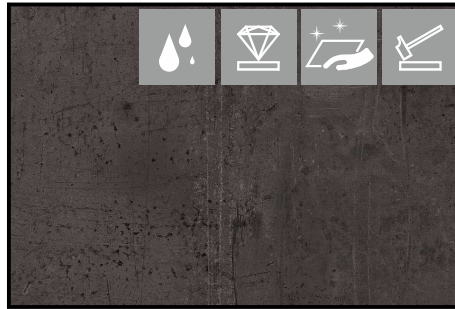
Speciální lamináty a barvy lze objednat, ale dodací lhůta může být delší.

Pro aktuální verzi této brožury navštivte prosím naše webové stránky.

Valid from 6/2023



PFLEIDERER U11102 White (white core)



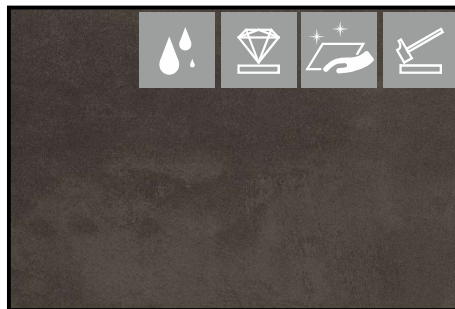
FUNDERMAX 0428 Cave



FUNDERMAX 0794 Patina Bronze



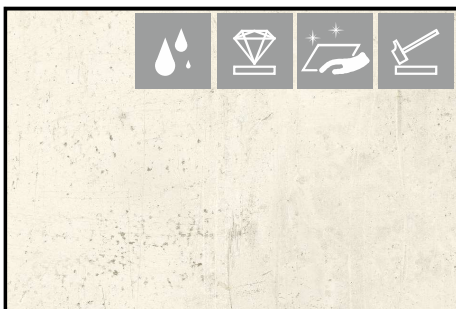
FUNDERMAX 0026 Prado Alu Grey



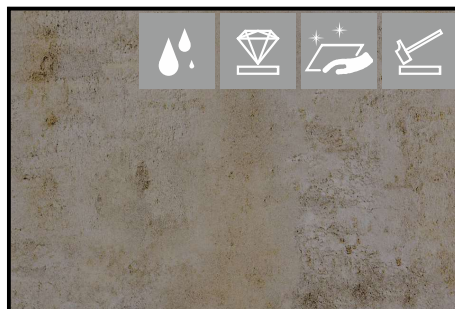
FUNDERMAX 0027 Prado Agate Grey



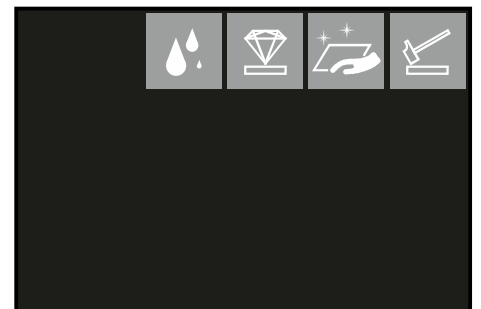
FUNDERMAX 0565 Polaris



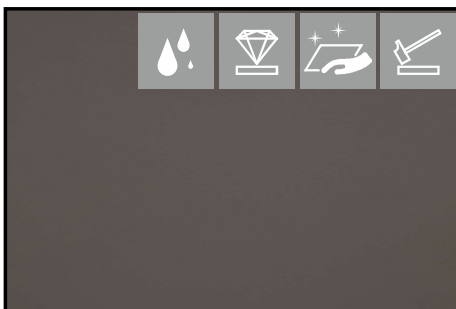
FUNDERMAX 0426 Loft



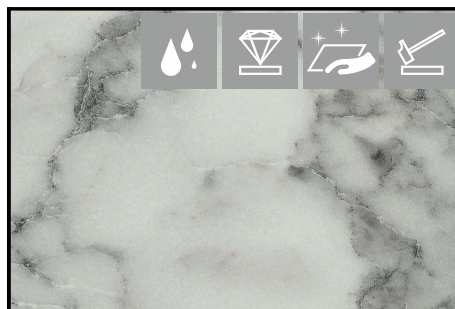
FUNDERMAX 0793 Patina Tin



FUNDERMAX 0080 Black



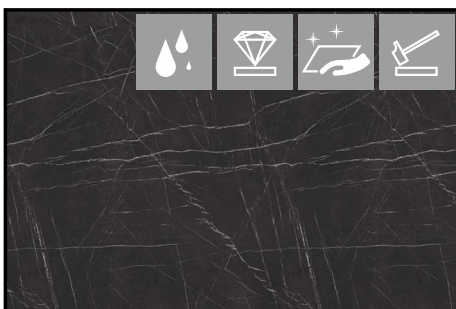
FENIX 0718 NTM Grigio Londra



PFLEIDERER S63009 Mramor Carrara



EGGER U7081 Light grey



EGGER F206 Pietra Grigia Black



EGGER F186 Beton Chicago Light Grey



PFLEIDERER U11102 White (black core)



EGGER H1145



EGGER H1176



EGGER H1180



EGGER H1181



EGGER H1313



EGGER H1318



EGGER H1344



EGGER H1401



EGGER H1486



EGGER H2033



EGGER H3133



EGGER H3176



EGGER H3303



EGGER H3330



EGGER H3331



HPL postforming worktops
postformingové desky



EGGER H3730



EGGER F121



EGGER F186



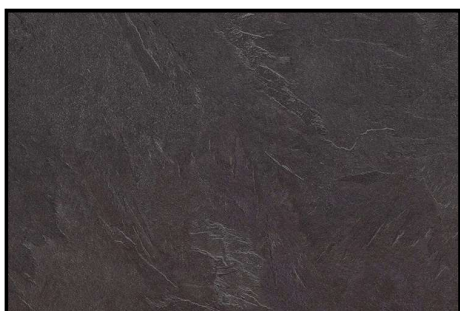
EGGER F187



EGGER F205



EGGER F206



EGGER F242



EGGER F302



EGGER F637



KAINDL 34139 Oak sanremo sand



KAINDL 34318 Pine laramie



KAINDL 34321 Oxide



KAINDL 35252 Oak chalet



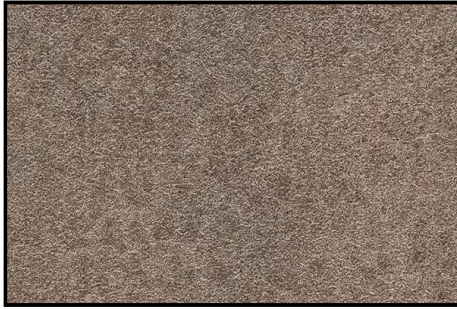
KAINDL 37905 Beton art



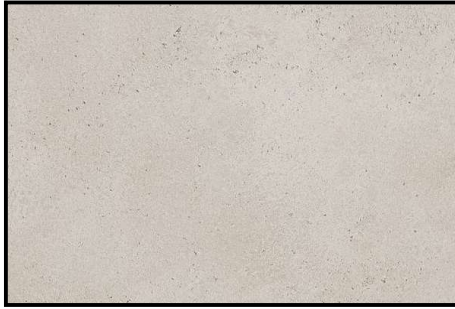
KAINDL 37978 Mocca



HPL postforming worktops
postformingové desky



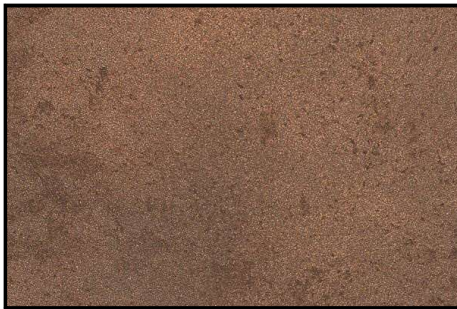
KAINDL 37979 Tobacco



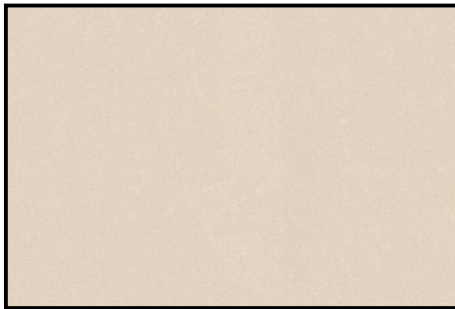
KAINDL 38356 Natural stone



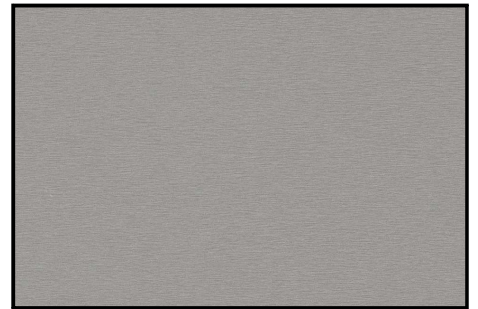
KAINDL 44375 Concrete art pearl grey



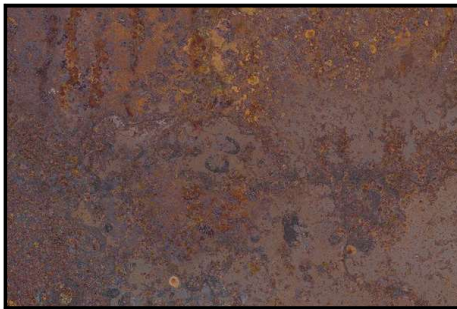
KAINDL 45274 Corten steel



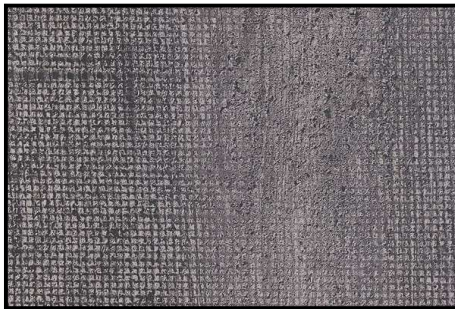
KAINDL 47981 Sahara



KAINDL 5853 Titan



KAINDL K4398 Rusty iron



KAINDL K4453 Concrete weave anthracite



KAINDL K4890 Arabescato



KAINDL K4894 Steel grey coffee



KAINDL K4895 Atlantic stone graphite



KAINDL K4896 Atlantic stone steel



KAINDL K5284 Oak rosevelt



KAINDL K5413 Oak ENDgrain cognac



KAINDL K5414 Oak ENDgrain classic

Worktops / pracovní desky



HPL postforming worktops
postformingové desky



KAINDL K5574 Oak evoke sunset

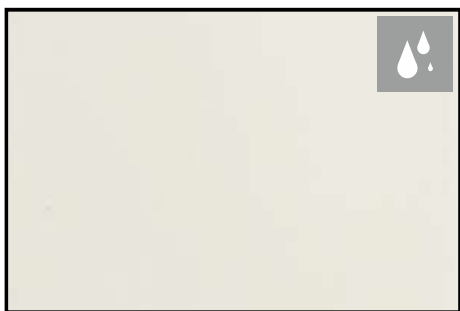


KAINDL K5579 Oxid dark brown

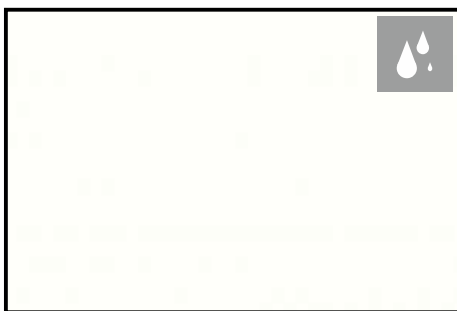


KAINDL K5580 Chepe

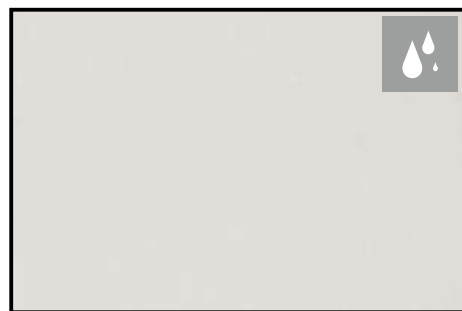
Solid worktops
desky z minerálního kamene



504 Snow



510 Ultra white



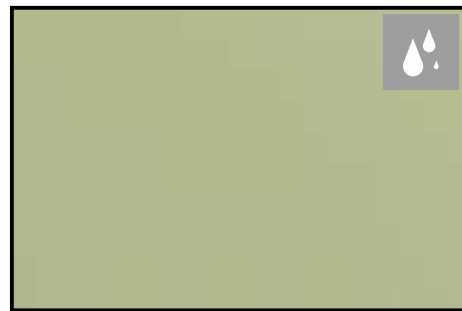
513 Lanza



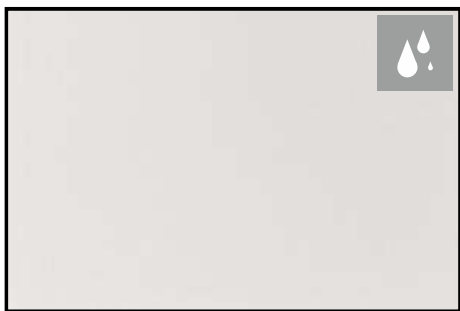
517 Arancione



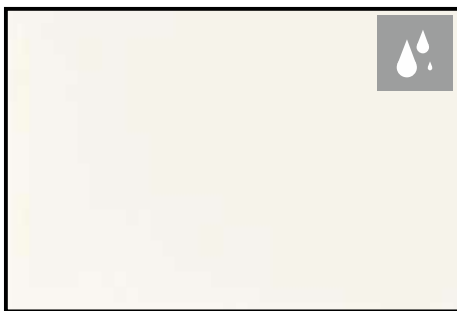
531 Cranberry



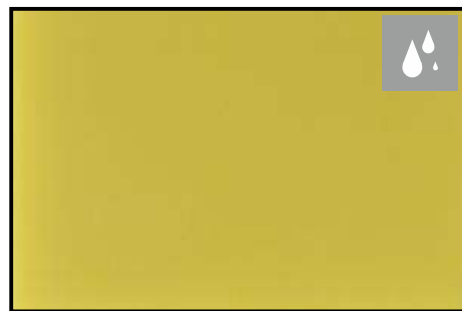
551 Lucid green



552 Lucid white C

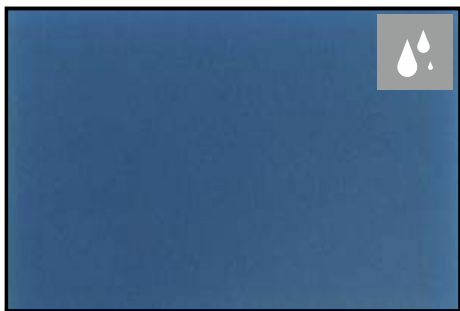


553 Lucid white W



554 Lucid yellow

Polyston Solid Surface
desky z minerálního kamene Polyston



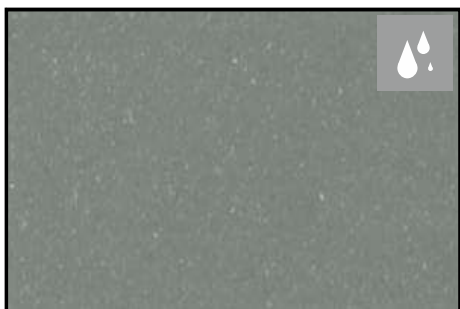
555 Lucid blue



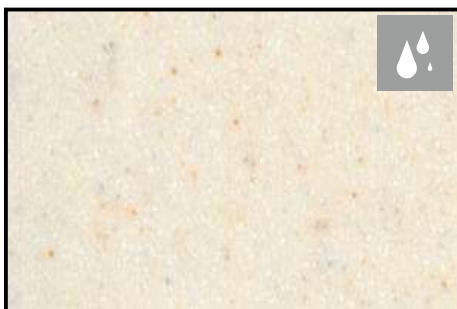
1104 Carbone



1110 Caillou



1112 Granito



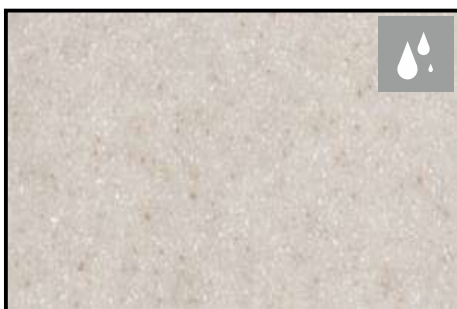
1127 Caseus



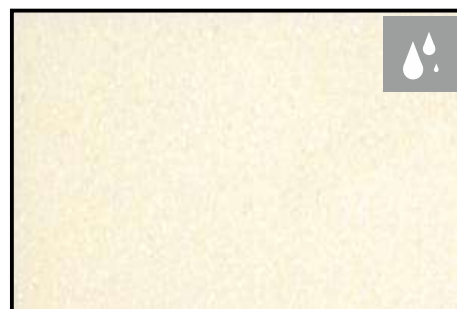
1129 Papavero



1132 Lave



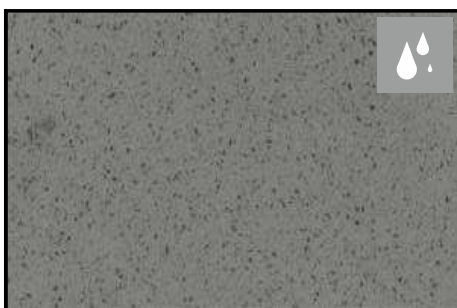
1133 Cammello



1148 Sale



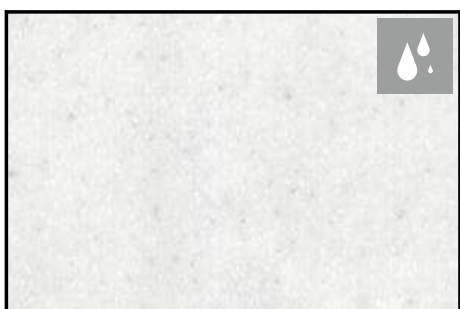
1151 Solum



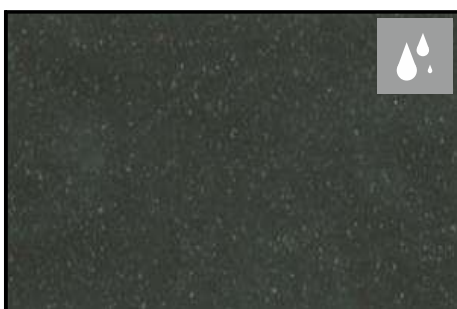
1158 Gobi



1159 Jucundo



1161 Enamel



1163 Haya

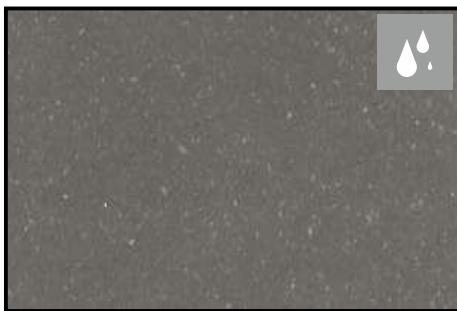


1165 Canela

Polyston Solid Surface
desky z minerálního kamene Polyston



1168 Tempe



1171 Seis



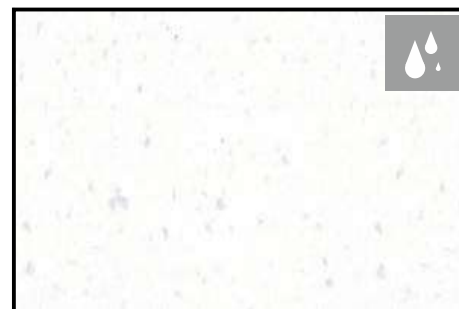
1213 Nix hare



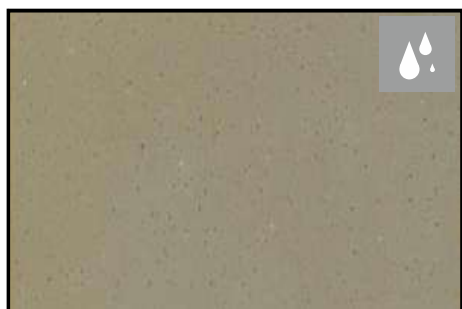
1217 Amonia



1218 Deserto



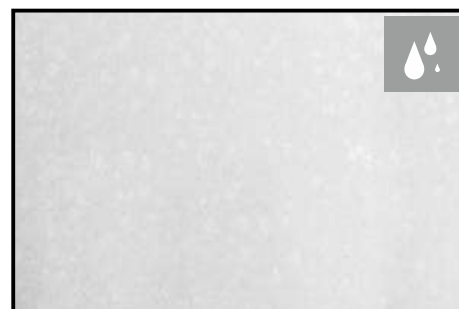
1220 Zucchero



1221 Coyote



1227 Antracit



1321 Lime



1324 Cagliata



1342 Ursus



1345 Nevado



1346 Lobo



1348 Micha



1349 Sol

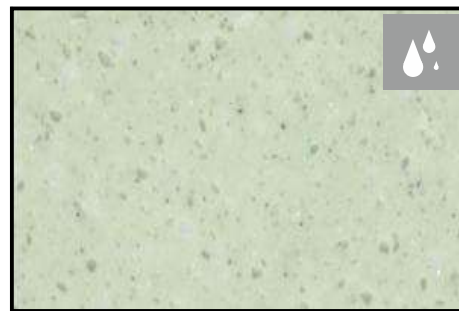
Polyston Solid Surface
desky z minerálního kamene Polyston



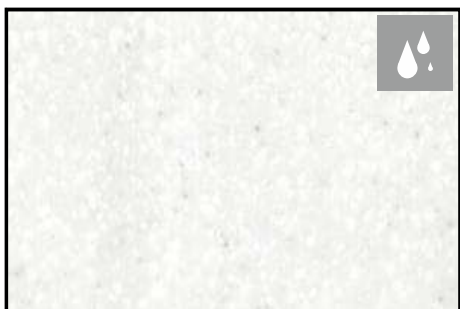
1351 Craneo



1352 Betula



1353 Oruga



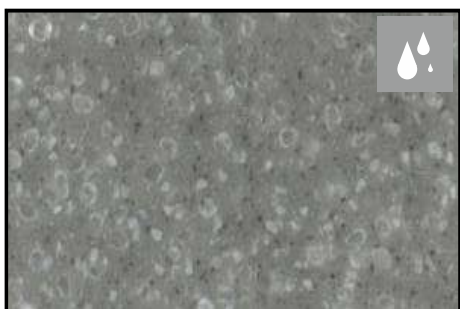
1354 Snowlit



1413 Seligit



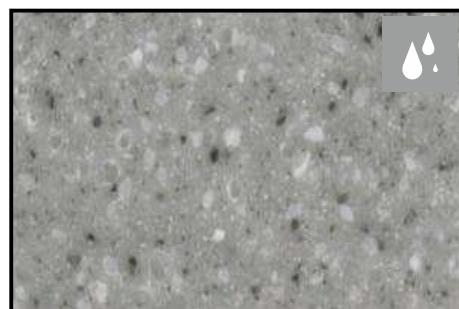
1417 Huron



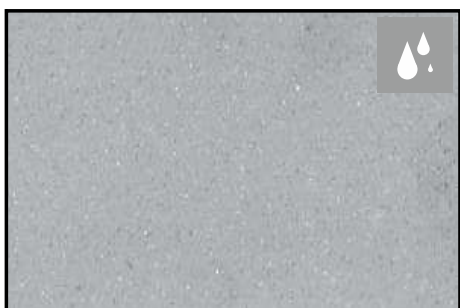
1418 Raton



1420 Caries



1421 Grava



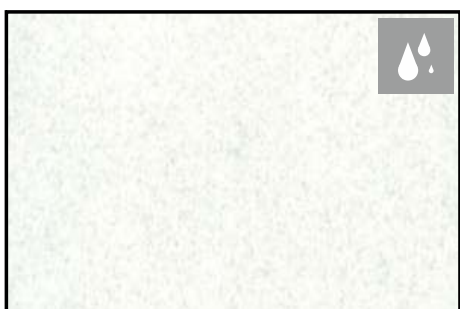
1610 Pietra



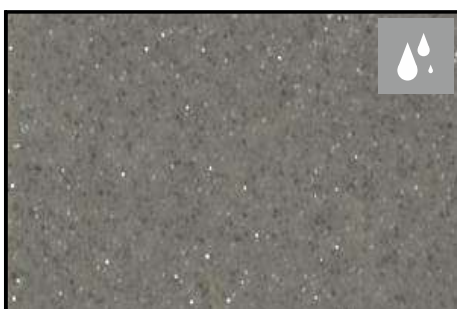
1611 Cemento



1612 Brillante



1620 Neige

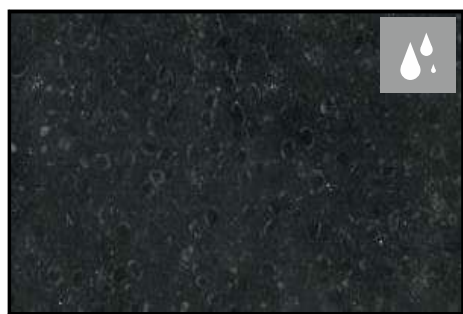


1621 Calvaria



1623 Molde

Polyston Solid Surface
desky z minerálního kamene Polyston



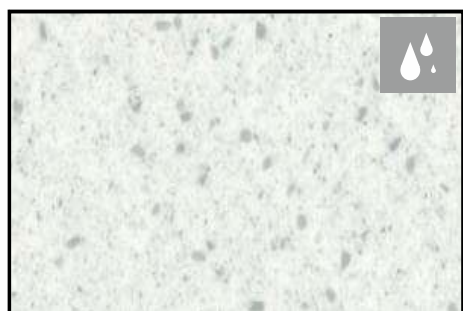
1624 Metalico



1625 Aurum



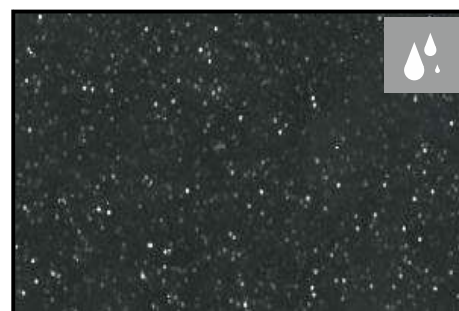
1628 Gato



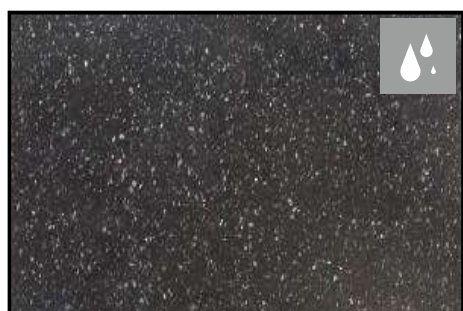
1629 Greyness



1640 Tristeza



1643 Superstar



1644 Rauma



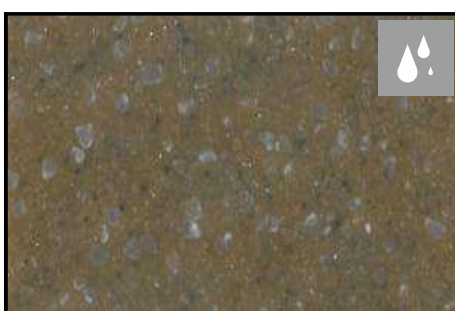
1646 Negra



1647 Korkone



1648 Jacarande



1649 Papoule

Ceramic worktops Porcela By Polyston
desky z velkoformátové keramiky Porcela by Polyston



PORCELA Calacatta Imperiale



PORCELA Forte



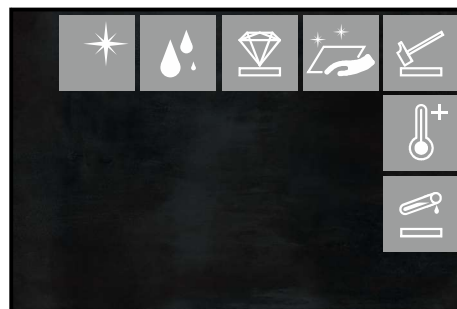
PORCELA Pietrasanta



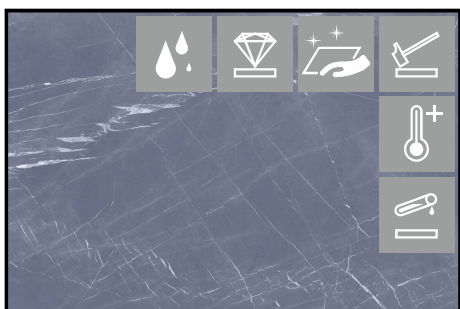
PORCELA Calacatta Antique



PORCELA Statuario Supremo



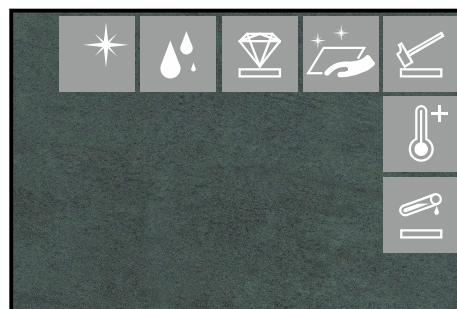
PORCELA Blaze Iron



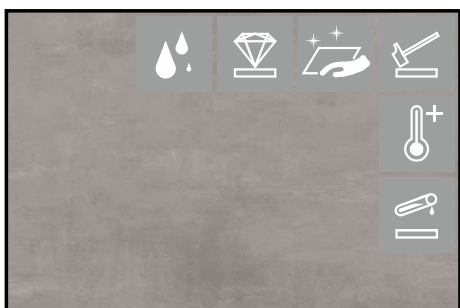
PORCELA Grafite



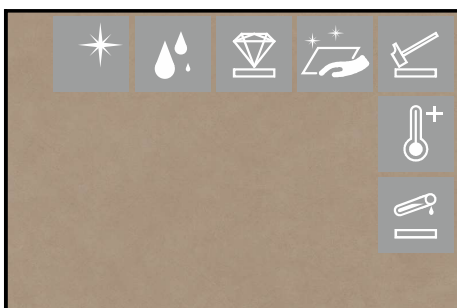
PORCELA Soapstone Dark



PORCELA Basaltina Volcano



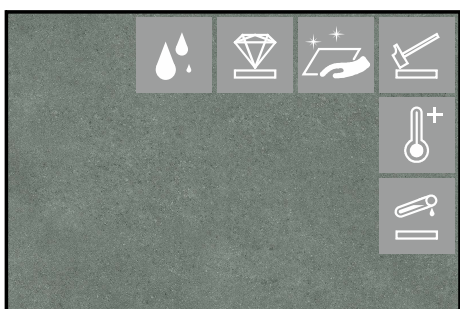
PORCELA Boost Grey



PORCELA Boost Natural Ecreu



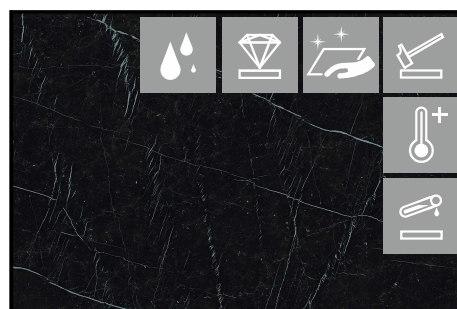
PORCELA White Cloud



PORCELA Kone Grey



PORCELA Kone Mix



PORCELA Nero Marquina

Ceramic worktops Neolith
desky z velkoformátové keramiky Neolith



NEOLITH Abu Dhabi White



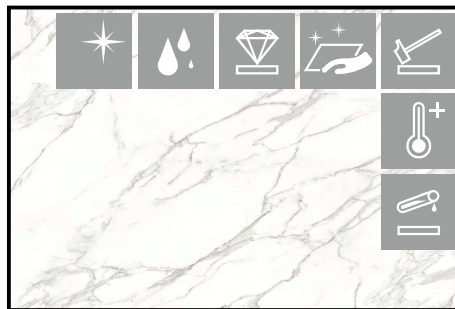
NEOLITH Calacatta Luxe



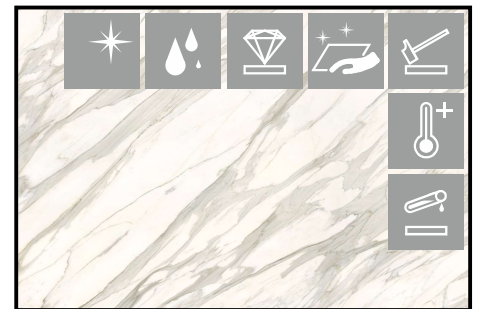
NEOLITH Estatuuario



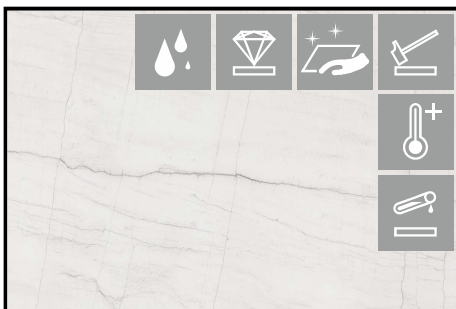
NEOLITH Himalaya Crystal



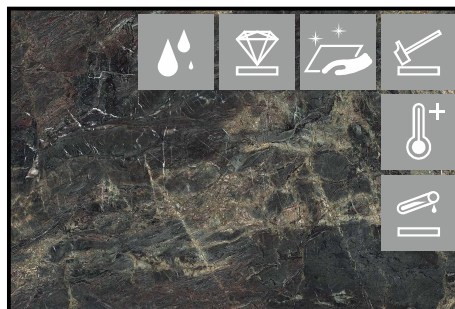
NEOLITH Calacatta



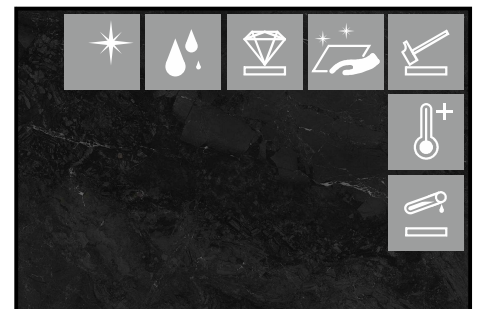
NEOLITH Calacatta Gold



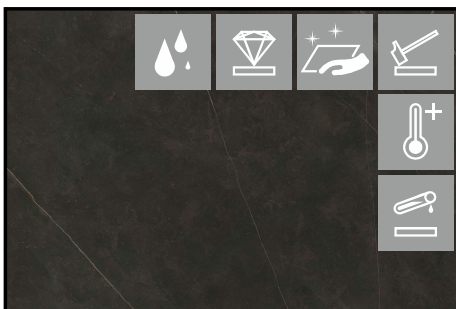
NEOLITH Mont Blanc



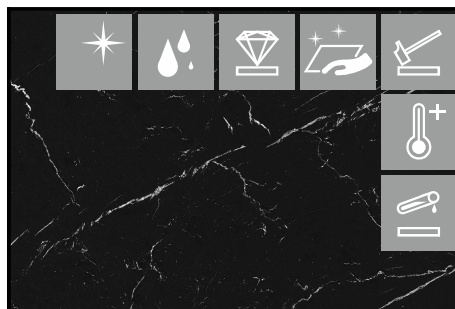
NEOLITH Amazonico



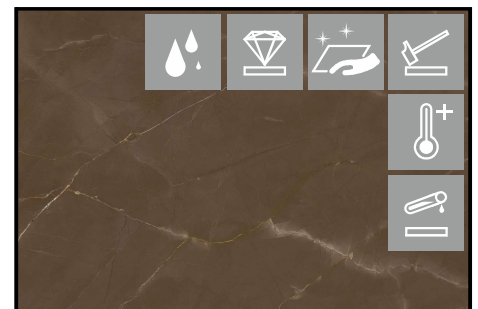
NEOLITH Layla



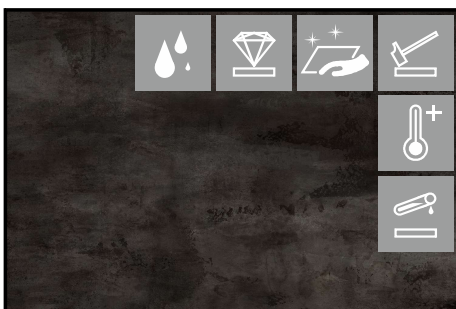
NEOLITH Calatorao



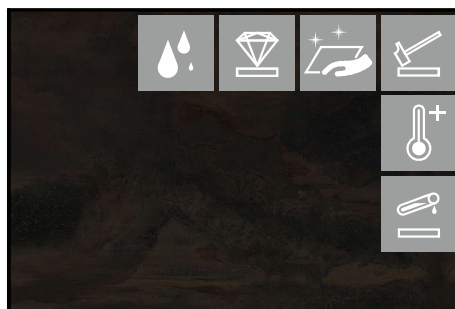
NEOLITH Nero Marquina



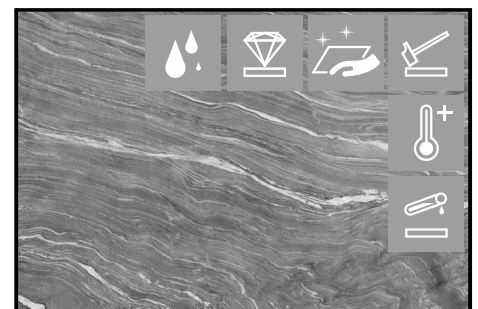
NEOLITH Pulpis



NEOLITH Metropolitan

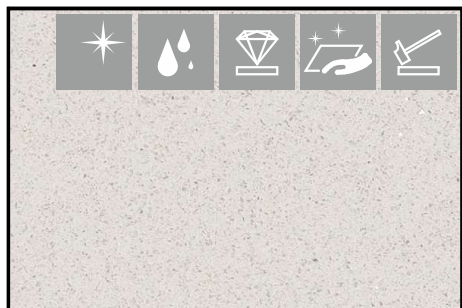


NEOLITH Sofa Cuprum



NEOLITH Mar Del Plata

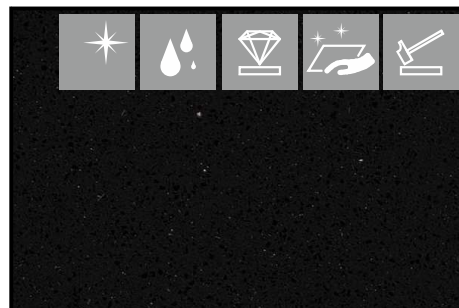
Quartz stone worktops Technistone
desky z technického kamene Technistone



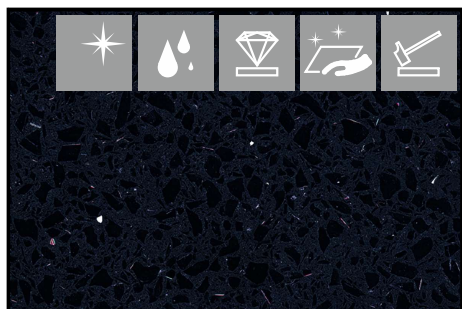
TECHNISTONE Brilliant White



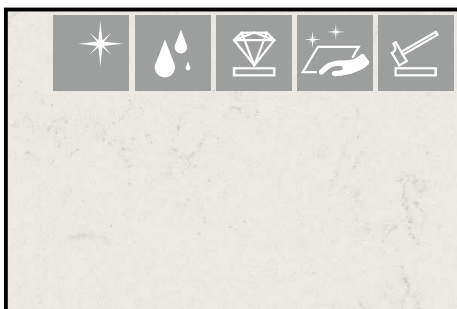
TECHNISTONE Starlight White



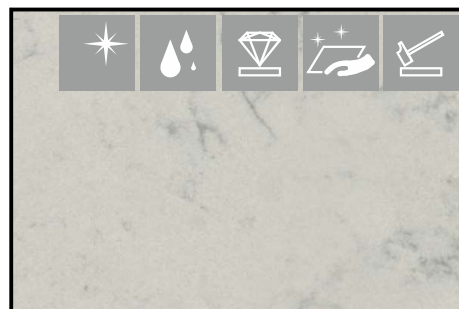
TECHNISTONE Brilliant Black



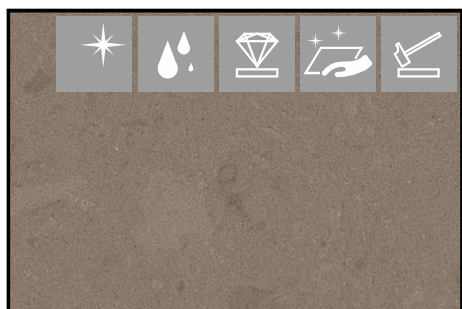
TECHNISTONE Starlight Black



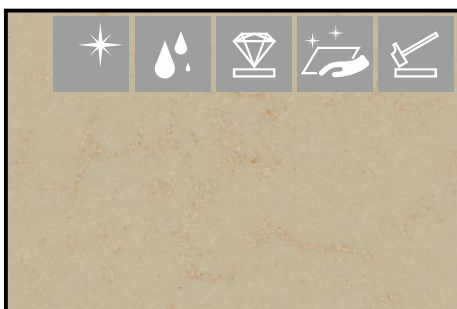
TECHNISTONE Noble Supreme White



TECHNISTONE Noble Carrara



TECHNISTONE Noble Troya



TECHNISTONE Noble Botticino



TECHNISTONE Crystal Absolute White



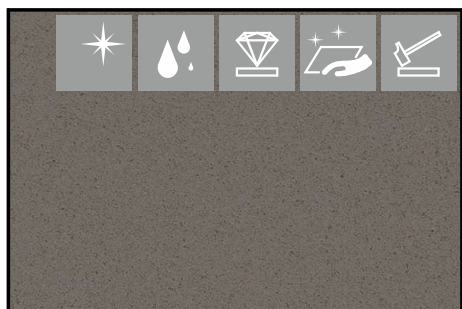
TECHNISTONE Crystal Polar White



TECHNISTONE Crystal Diamond



TECHNISTONE Crystal Royal



TECHNISTONE Gobi Grey



TECHNISTONE Crystal Anthracite Pure

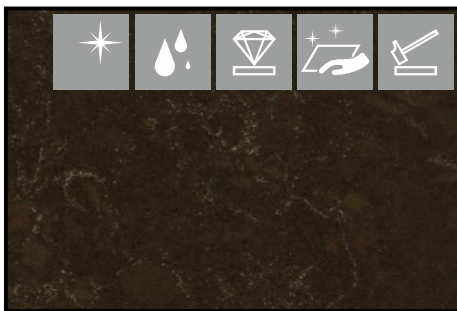


TECHNISTONE Gobi Black

Quartz stone worktops Technistone
desky z technického kamene Technistone



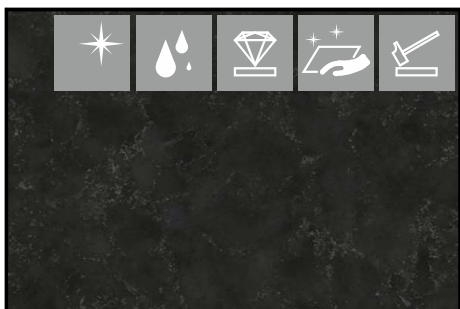
TECHNISTONE Taurus Black



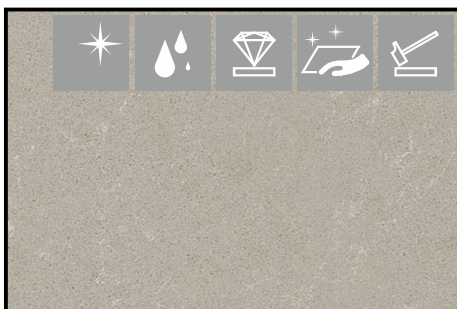
TECHNISTONE Noble Athos Brown



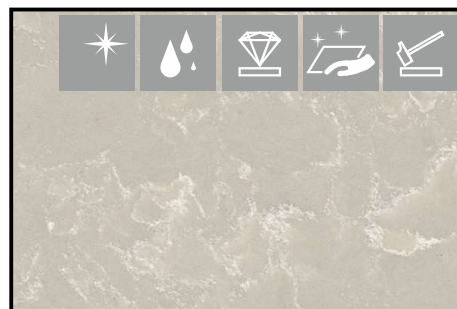
TECHNISTONE Noble Concrete Grey



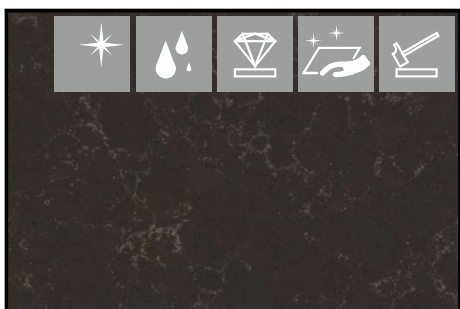
TECHNISTONE Noble Imperial Grey



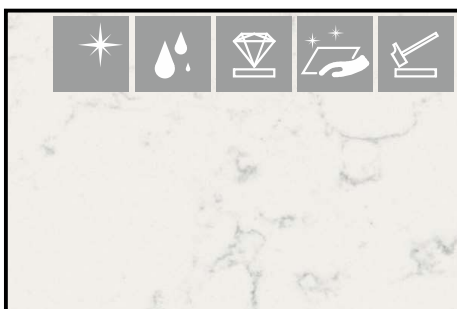
TECHNISTONE Noble Ivory White



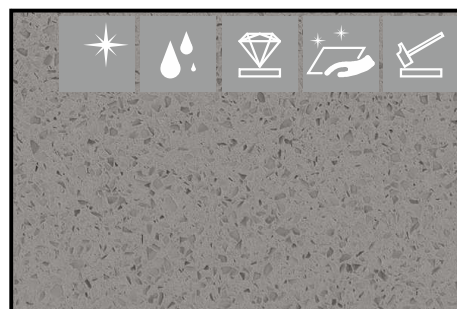
TECHNISTONE Noble Olympos Mist



TECHNISTONE Noble Pietra Grey



TECHNISTONE Noble Areti Bianco



TECHNISTONE Elegance Eco Ash



TECHNISTONE Elegance Eco Nev



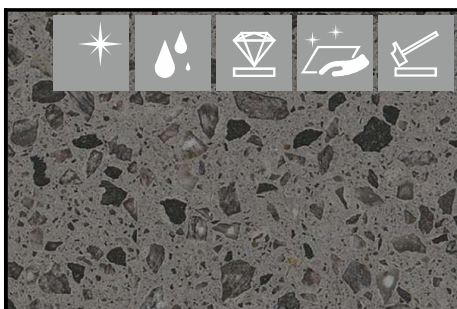
TECHNISTONE Elegance Eco Zen



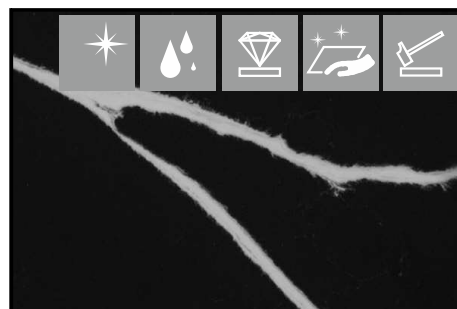
TECHNISTONE Noble Pro Frost



TECHNISTONE Crystal Calacatta Silva



TECHNISTONE Taurus Terazzo Grey

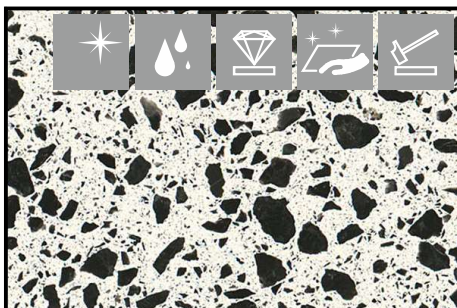


TECHNISTONE Poetic Black

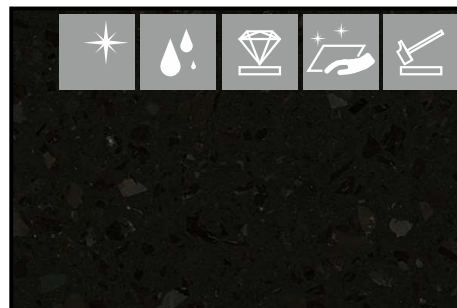
Quartz stone worktops Technistone
desky z technického kamene Technistone



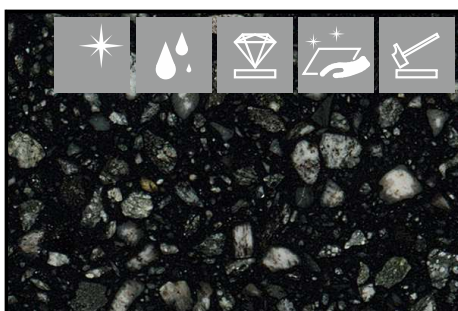
TECHNISTONE Mystery White



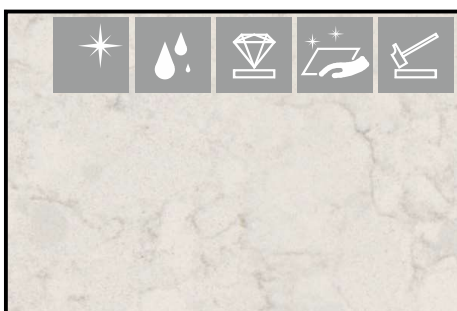
TECHNISTONE Taurus Terazzo White



TECHNISTONE Taurus Terazzo Dark



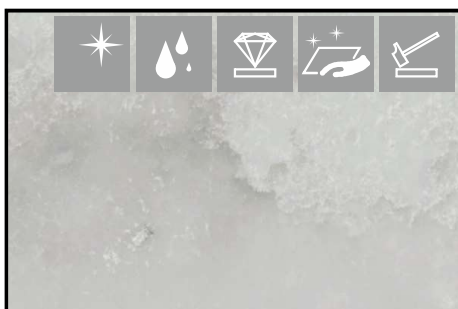
TECHNISTONE Taurus Terazzo Black



TECHNISTONE Noble Arco



TECHNISTONE Gobi Urban



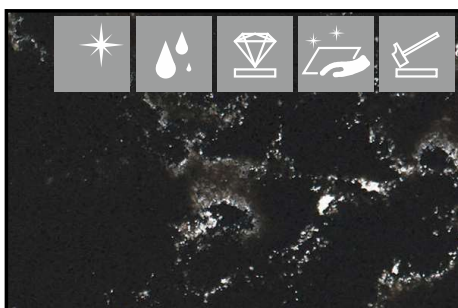
TECHNISTONE Ambiente Light



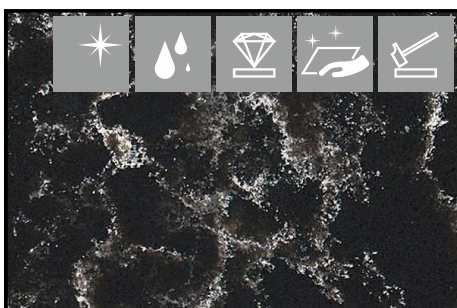
TECHNISTONE Residente Dark



TECHNISTONE Pearl Lava



TECHNISTONE Pearl Delta

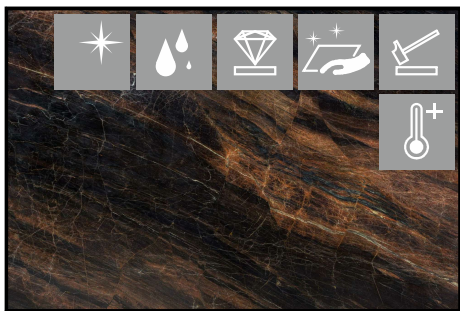


TECHNISTONE Pearl Rocca

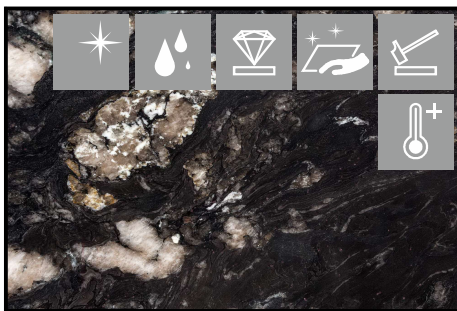


TECHNISTONE Decore Ocra

Natural stone worktops Neolith
žulové desky Neolith



NEOLITH Brown Amber



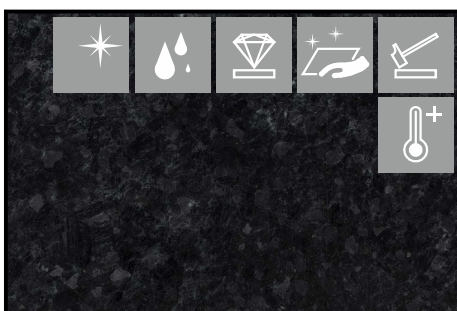
NEOLITH Dark Pearl



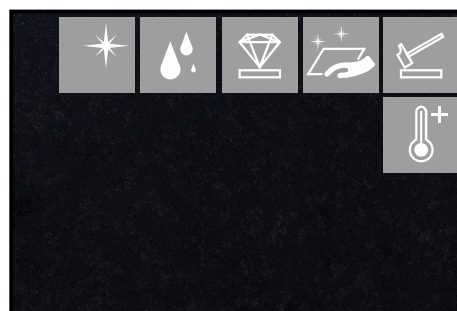
NEOLITH Habana



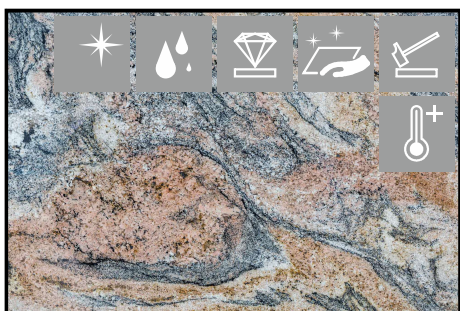
NEOLITH Mare



NEOLITH Nero Infinito



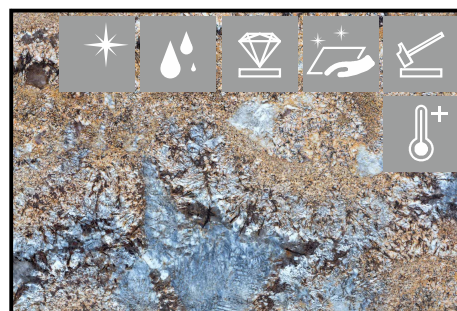
NEOLITH Nero Kariba



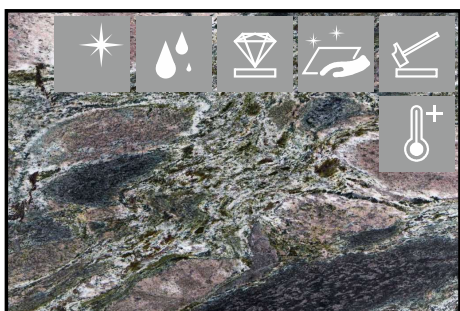
NEOLITH Sahara Winds



NEOLITH Toroncino



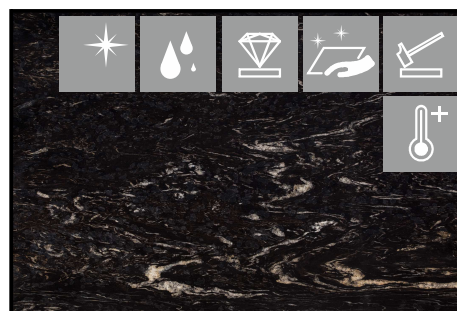
NEOLITH Tramonto



NEOLITH Verde Floresta



NEOLITH Verde Parana Bolas

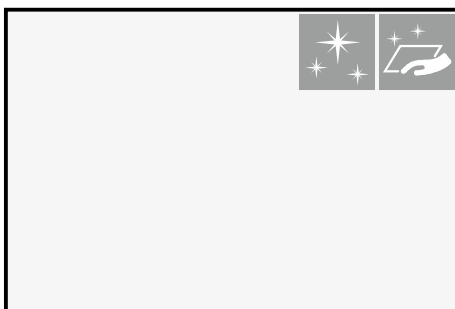


NEOLITH Soft Pearl

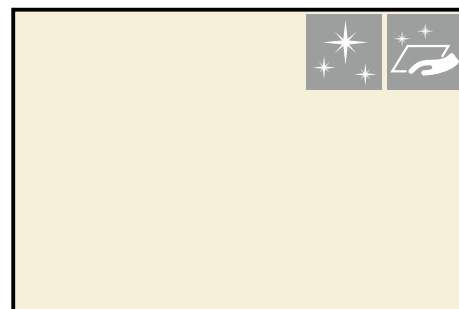
High gloss UNI color
lesklé UNI barvy



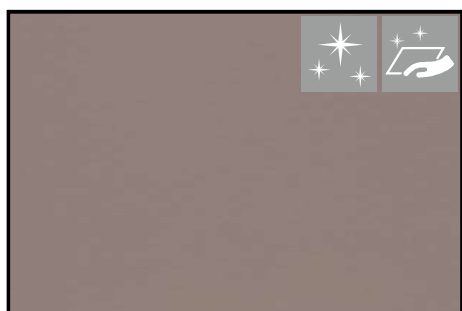
ACRYLUX 11046H HG Arctic white



ACRYLUX 1982H HG Off white



ACRYLUX 7496H HG Creme



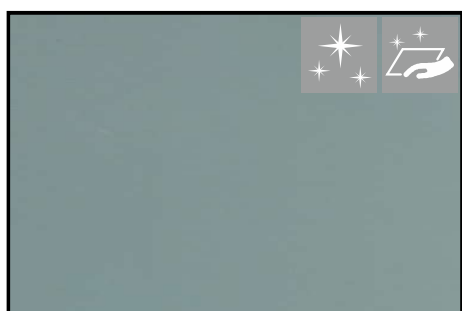
ACRYLUX 7498H HG Cappucino



ACRYLUX 85468H HG Cashmere



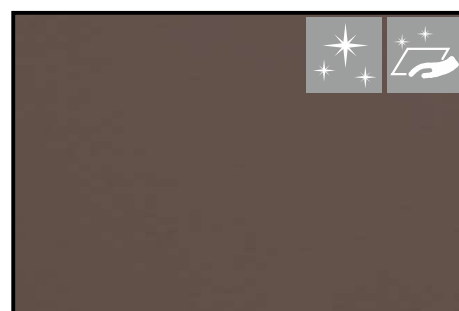
ACRYLUX 85384H HG Light grey



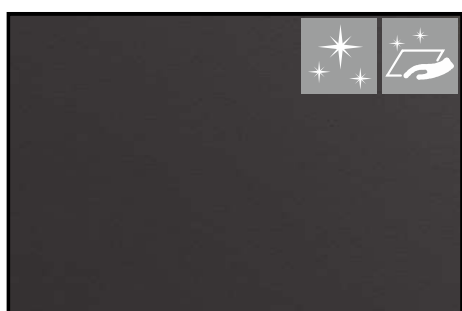
ACRYLUX 5357H HG Lagoon



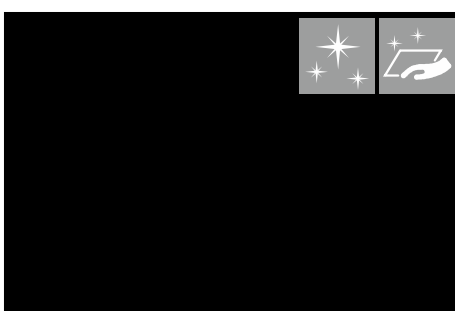
ACRYLUX 4670H HG Blue sea



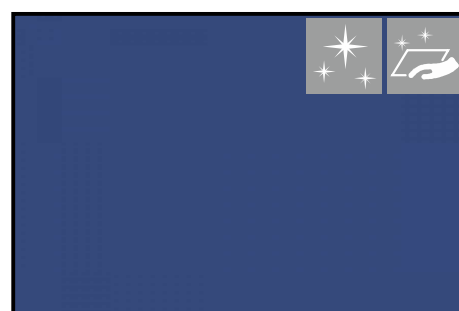
ACRYLUX 85383H HG Grey brown



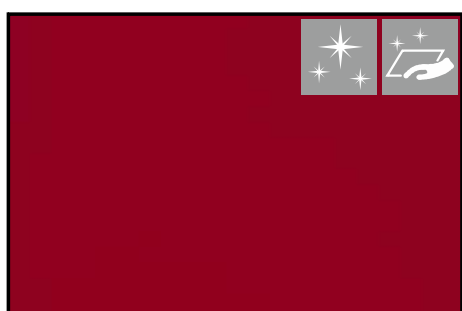
ACRYLUX 85382H HG Dark grey



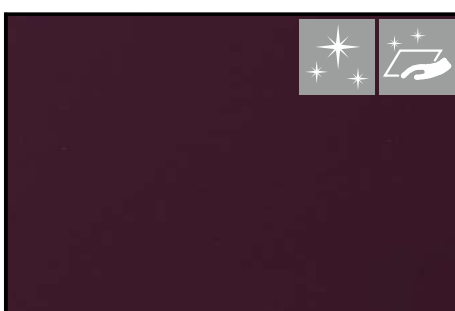
ACRYLUX 8421H HG Black



ACRYLUX 4644H HG Cobalt



ACRYLUX 3362H HG Red

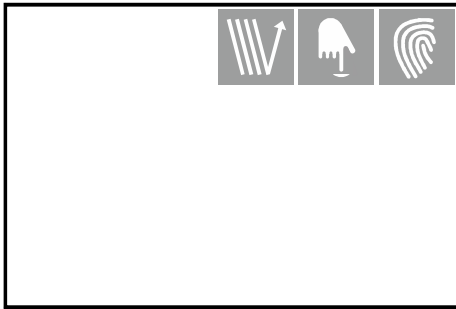


ACRYLUX 4548H HG Violet



ACRYLUX 4562H HG Oxyd

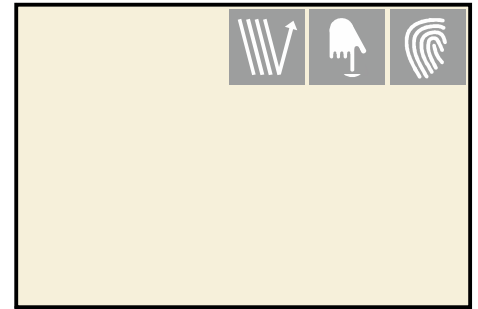
Matte UNI color
matné UNI barvy



ACRYLUX 11082M MATT Arctic white



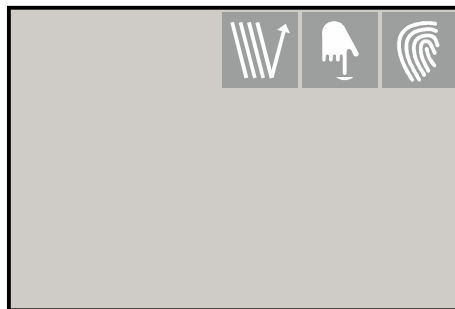
ACRYLUX 1982M MATT Off white



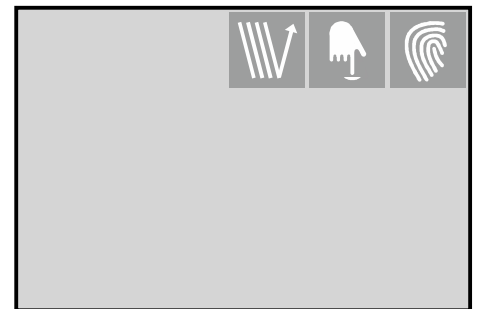
ACRYLUX 7496M MATT Creme



ACRYLUX 7498M MATT Cappucino



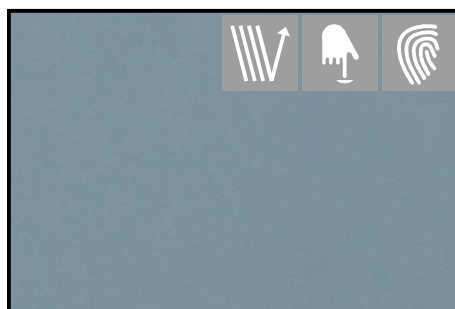
ACRYLUX 85468M MATT Cashmere



ACRYLUX 85384M MATT Light grey



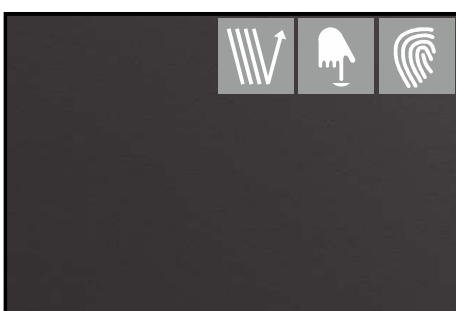
ACRYLUX 5357M MATT Lagoon



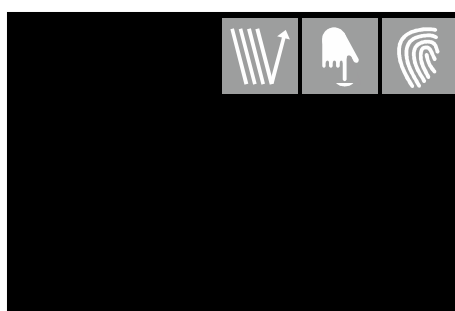
ACRYLUX 4670M MATT Blue sea



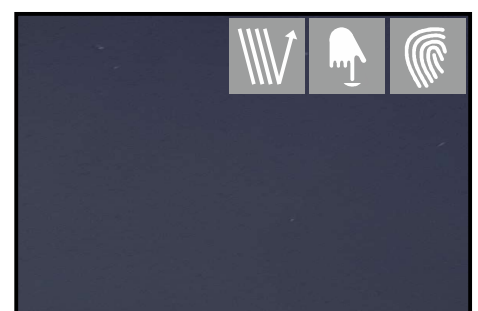
ACRYLUX 85383M MATT Grey brown



ACRYLUX 85382M MATT Dark grey



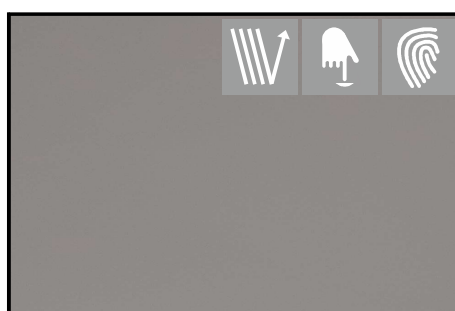
ACRYLUX 8421M MATT Black



ACRYLUX 4702M MATT Navy blue

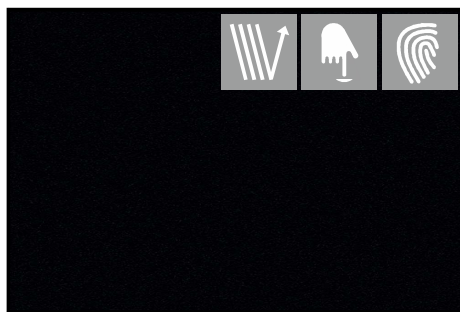


ACRYLUX 85728 M MATT Slate grey

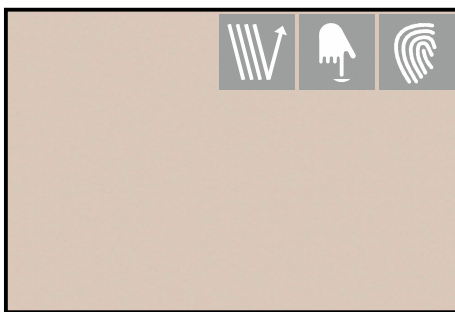


ACRYLUX 85735M MATT Granite

Matte UNI color
matné UNI barvy



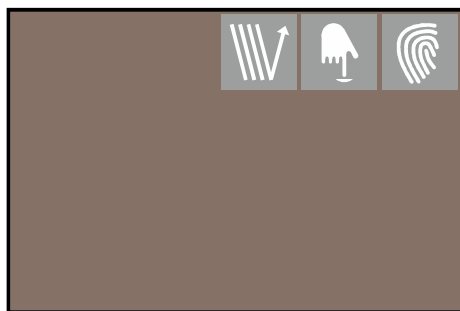
KAINDL 2190 OM Black RAL 9004



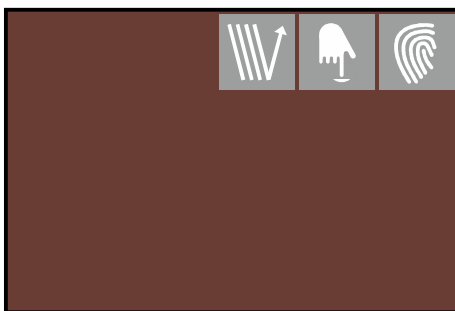
KAINDL 27045 OM Champagne



KAINDL 27049 OM Caschmere



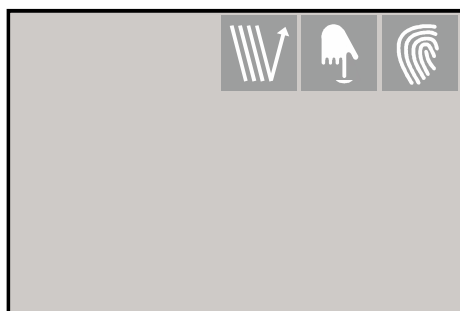
KAINDL 27166 OM Taupe



KAINDL 25727 OM Acai



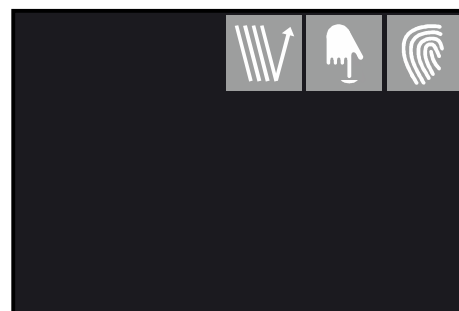
FUNDERMAX 0606 AP Arctic white



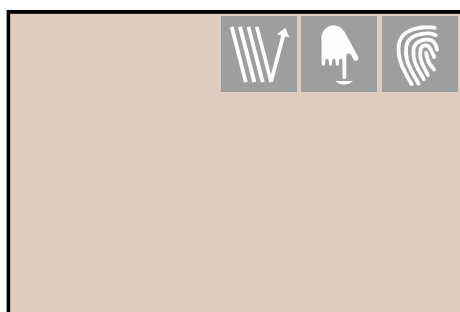
FUNDERMAX 0746 AP Hygienic grey



FUNDERMAX 0075 AP Dark grey



FUNDERMAX 0080 AP Black



FUNDERMAX 0693 AP Orchid



FUNDERMAX 0018 AP Divaro



FUNDERMAX 0733 AP Hygienic white



FUNDERMAX 2289 AP Tortona



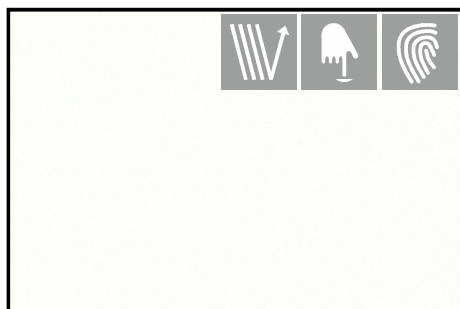
FUNDERMAX 0753 AP Cool grey medium



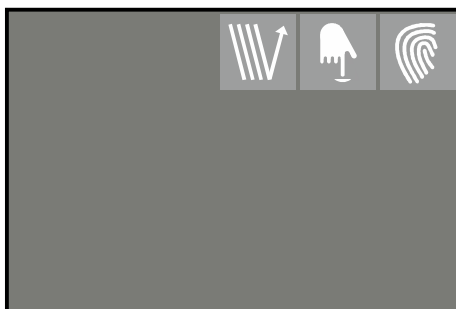
FUNDERMAX 0077 AP Charcoal

Front surfaces / přední plochy

Matte UNI color
matné UNI barvy



KAINDL 27018 OM Crystal white



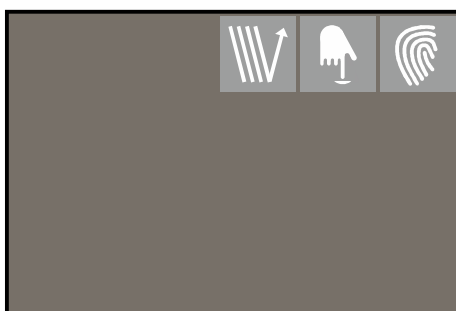
KAINDL 2171 OM Agate grey



KAINDL 2166 OM Basalt



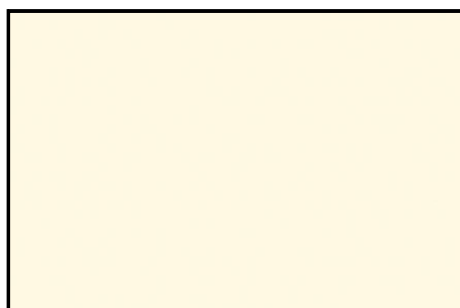
FUNDERMAX 2206 AP Fango



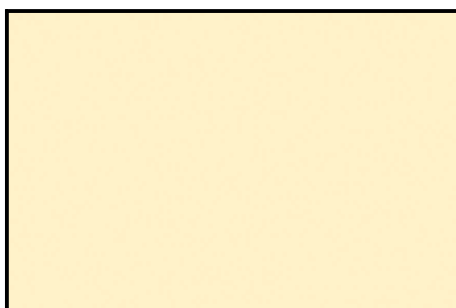
FUNDERMAX 0755 AP Warm grey dark

Front surfaces / přední plochy

Standard UNI color
standardní UNI barvy



EGGER U104 Alabaster white



EGGER U108 Vanilla yellow



EGGER U140 Saffron yellow



EGGER U156 Sand beige



EGGER U163 Curry yellow

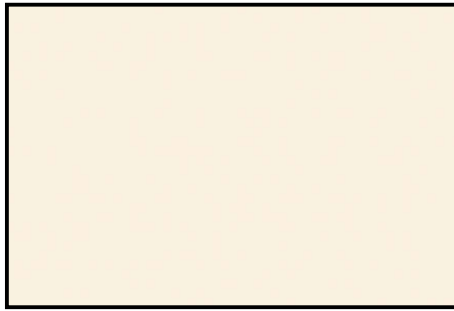


EGGER U200 Beige

Standard UNI color
standardní UNI barvy



EGGER U201 Pebble grey



EGGER U216 Came beige



EGGER U222 Crema beige



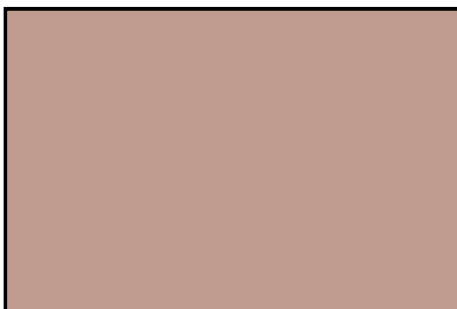
EGGER U311 Burgundy red



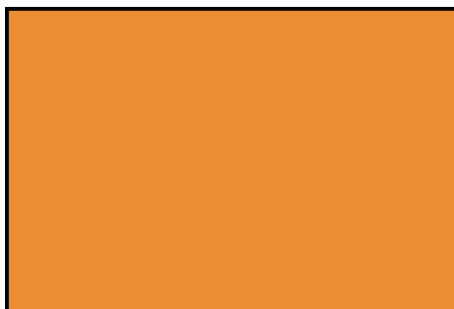
EGGER U321 China red



EGGER U323 Chilli red



EGGER U325 Antique rose



EGGER U332 Orange



EGGER U337 Fuchsia pink



EGGER U363 Flamingo pink



EGGER U504 Tyrolean blue



EGGER U522 Horizon blue



EGGER U525 Delft blue

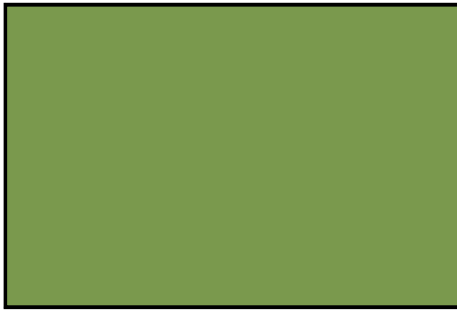


EGGER U600 May green

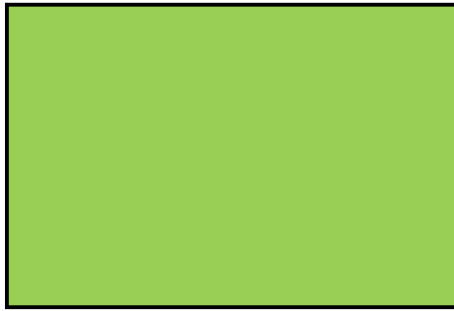


EGGER U606 Forest green

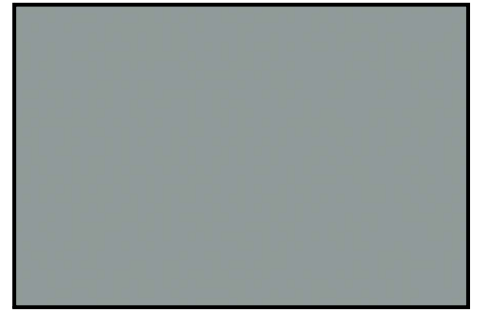
Standard UNI color
standardní UNI barvy



EGGER U626 Kiwi green



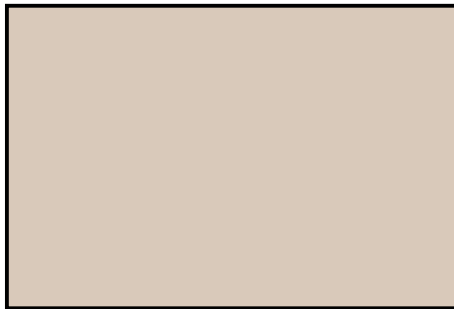
EGGER U630 Lime green



EGGER U636 Fjord green



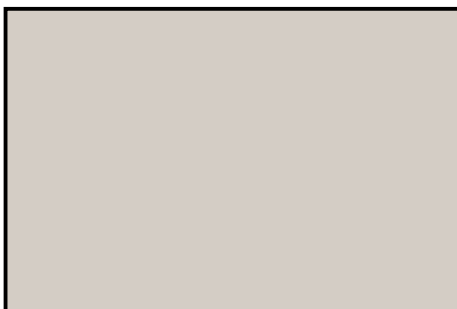
EGGER U646 Niagara green



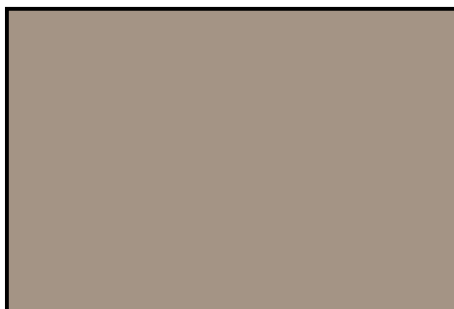
EGGER U702 Cashmere grey



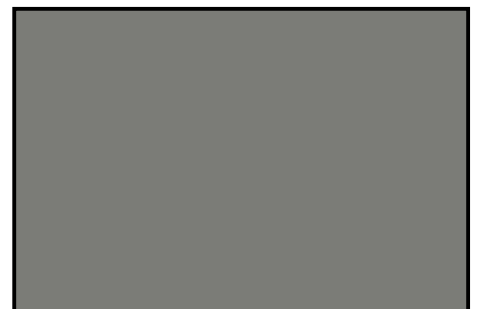
EGGER U707 Silk grey



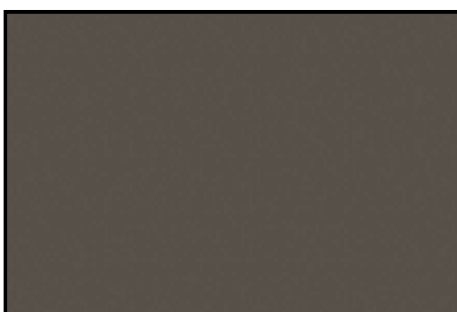
EGGER U708 Light grey



EGGER U727 Stone grey



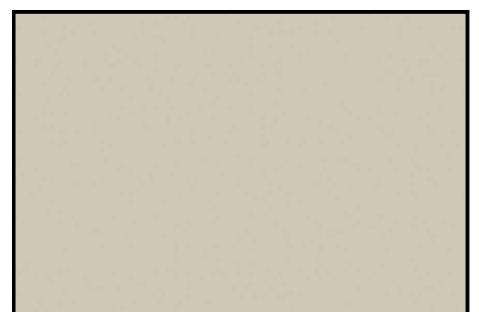
EGGER U732 Dust grey



EGGER U741 Lava grey



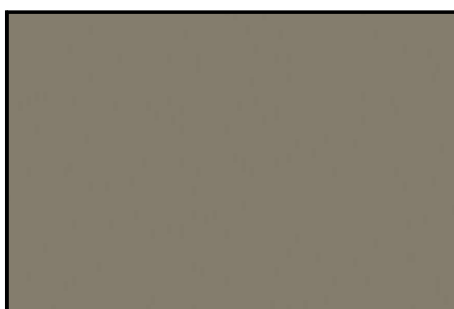
EGGER U748 Truffle brown



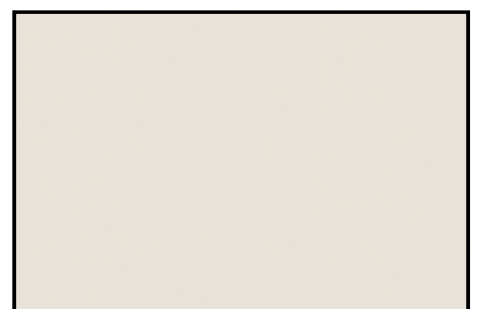
EGGER U750 Taupe grey



EGGER U763 Pearl grey

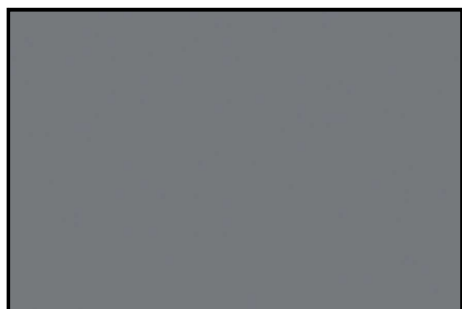


EGGER U767 Cubanit grey



EGGER U775 White grey

Standard UNI color
standardní UNI barvy



EGGER U780 Monument grey



EGGER U788 Arctic grey



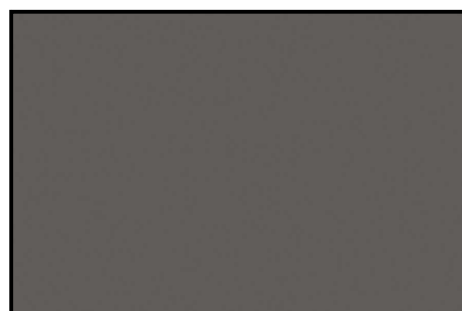
EGGER U818 Dark brown



EGGER U830 Caramel nude



EGGER U899 Soft black



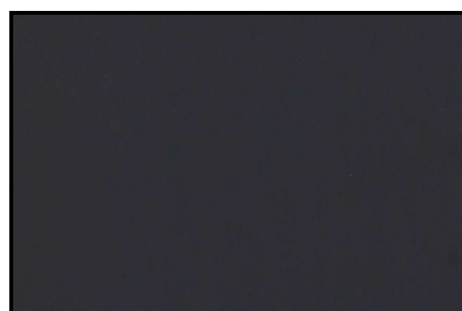
EGGER U960 Onyx grey



EGGER U961 Graphite grey



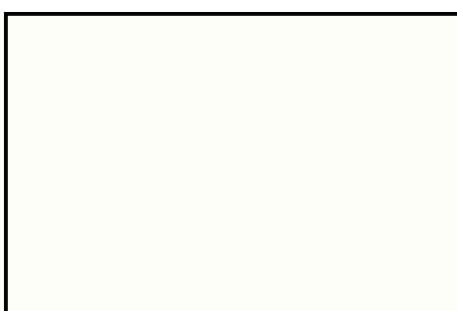
EGGER U963 Diamond grey



EGGER U968 Carbon grey



EGGER U999 Black



KRONO 8100 Pearl white



EGGER H1145



EGGER H1176



EGGER H1180



EGGER H1181



EGGER H1313



EGGER H1318



EGGER H1344



EGGER H1401



EGGER H1486



EGGER H2033



EGGER H3133



EGGER H3176



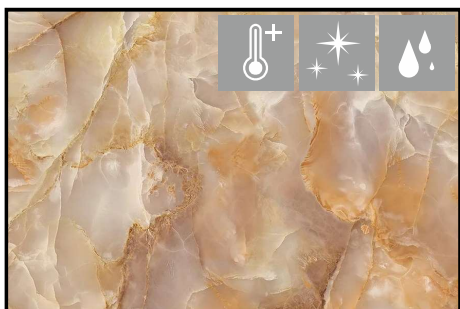
EGGER H3330



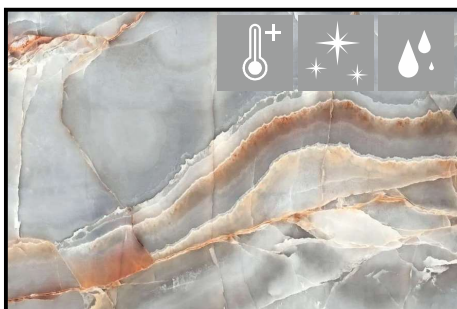
EGGER H3331



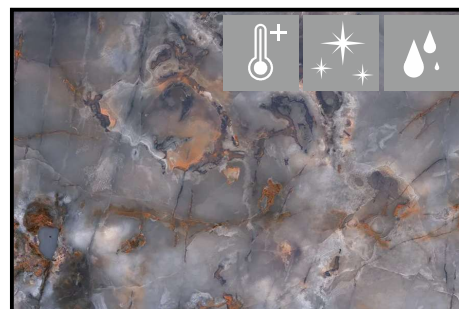
EGGER H3730



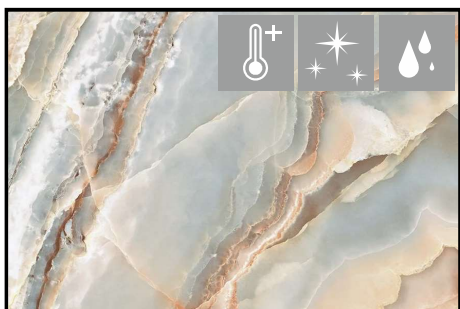
0150 Rhea



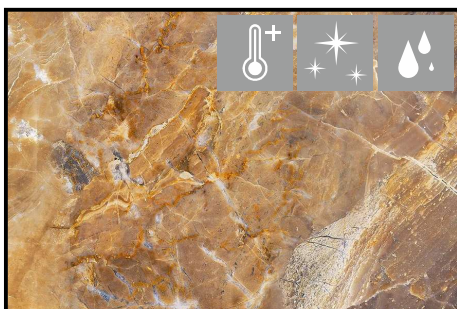
0002 Aqua Emperador



0177 Hints Of Lava



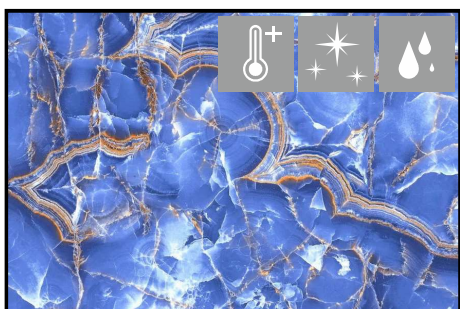
0196 Emperador



0146 Europa



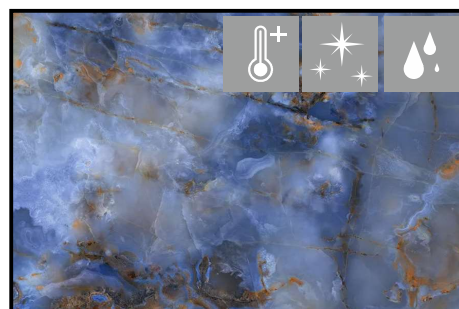
0028 Ice Galaxy



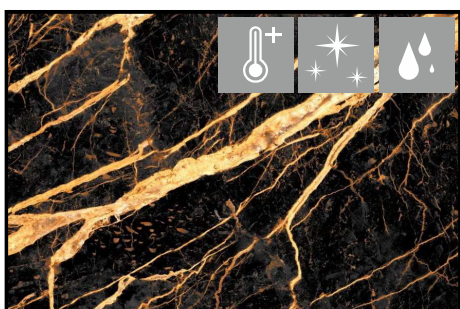
0008 Blue Lagoon



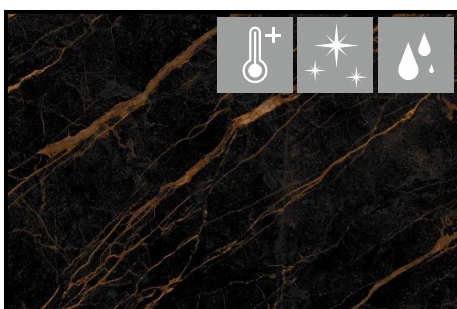
0113 Sapphire



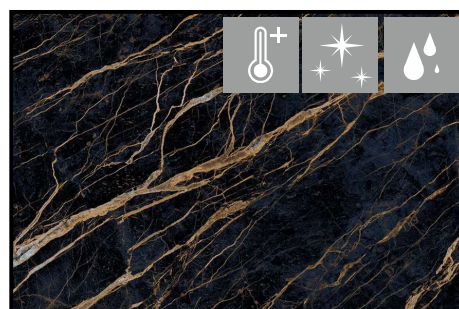
0140 Amethyst



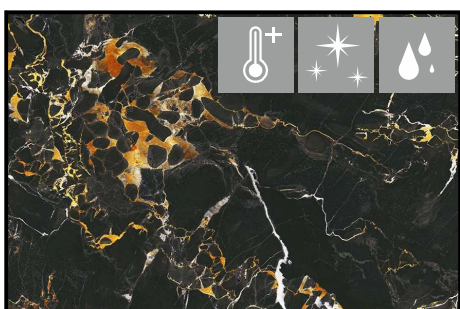
0012 Brown Amber



0197 Black Amber



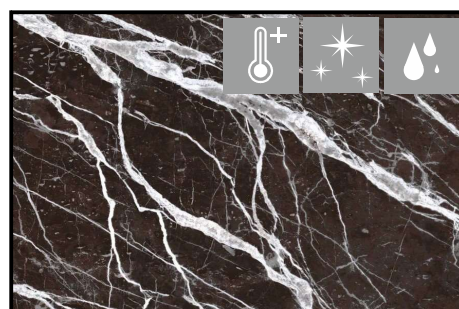
0198 Gold Lines



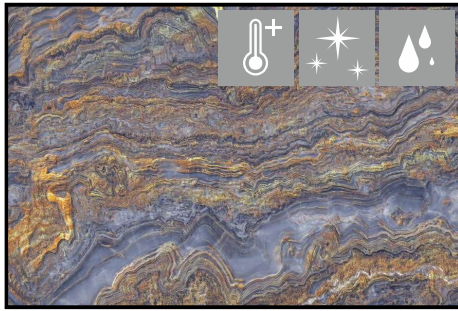
0130 Black And Gold



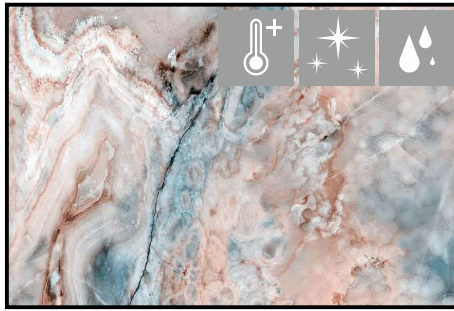
0115 Black Mirage



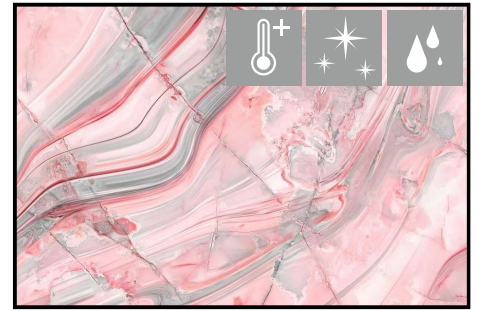
0001 Panda Black



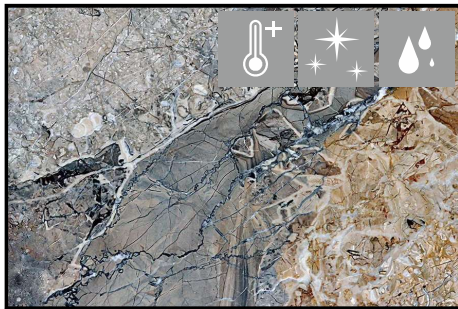
0059 Golden Relief



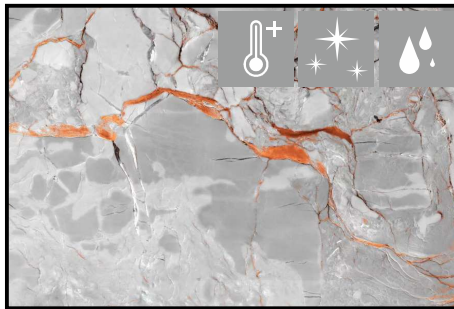
0023 Mint Emperador



0039 Lollipop



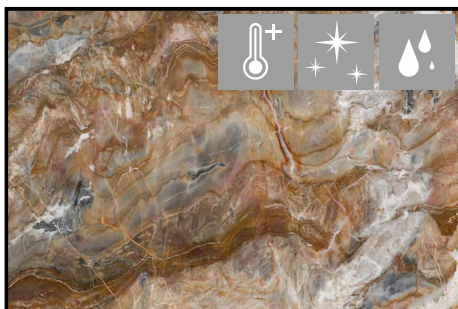
0119 Crystallized



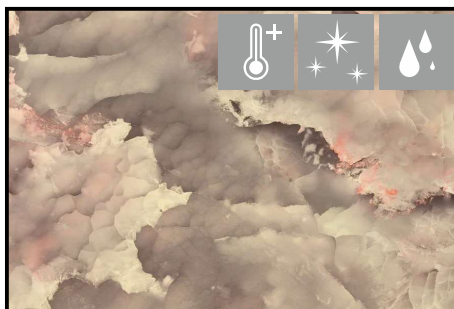
0077 Tuscan Marble



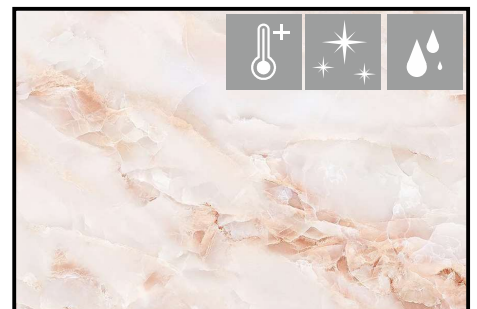
0165 White Opal



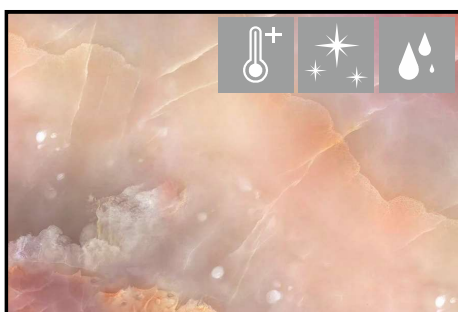
0085 Cave Stone



0088 Venus Heaven



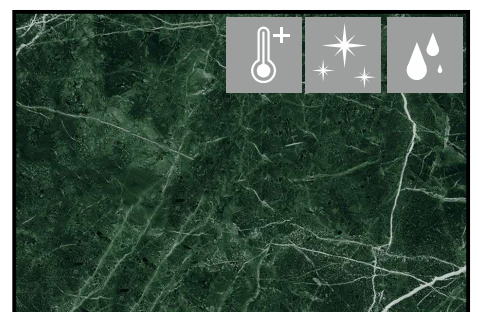
0107 Salt Lamp



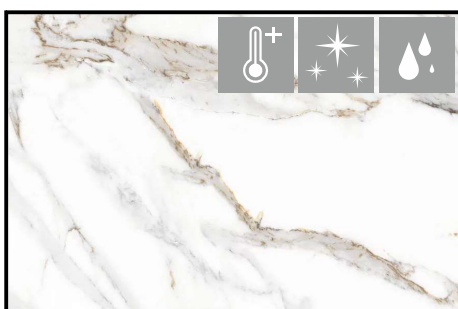
0154 Lakes Of Pink



0121 Himalayan Pink



0034 Smaragd



0035 Golden Snow

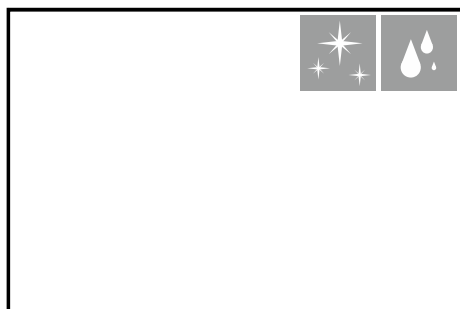


0127 Light Grey Stone

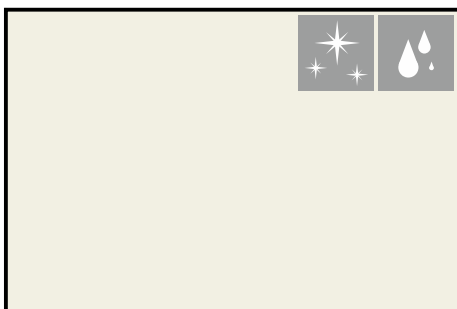


0125 Arabescus Carrara

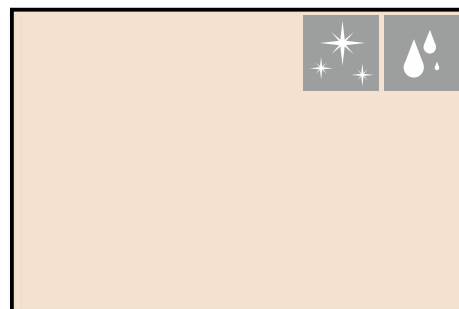
Glass Lacobel splashback
skleněné zástěny Lacobel



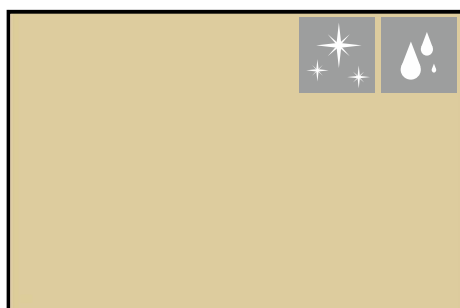
LACOBEL RAL 9003



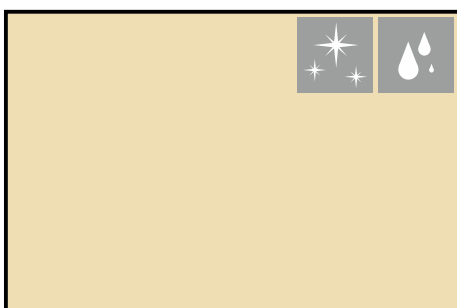
LACOBEL RAL 9010



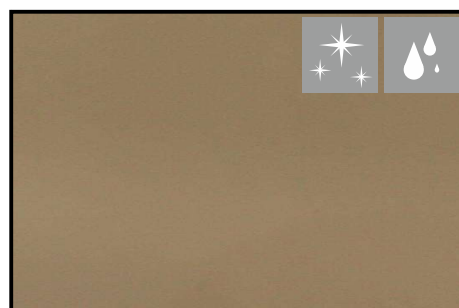
LACOBEL RAL 1013



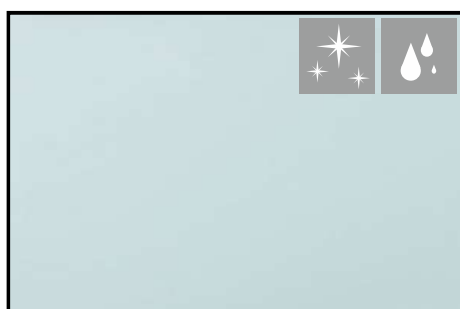
LACOBEL RAL 1014



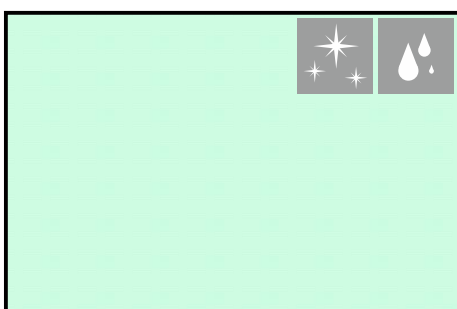
LACOBEL RAL 1015



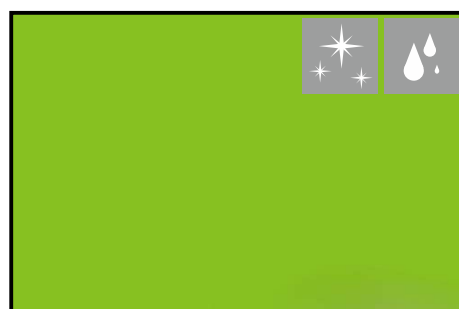
LACOBEL RAL 1236



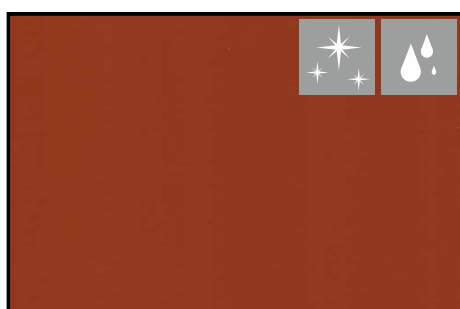
LACOBEL RAL 1603



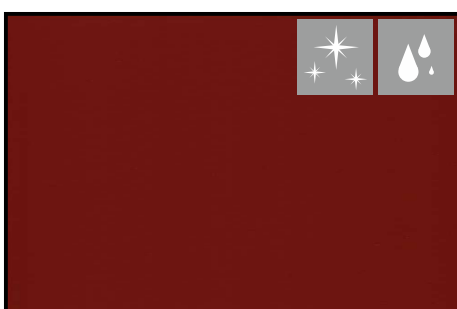
LACOBEL RAL 1604



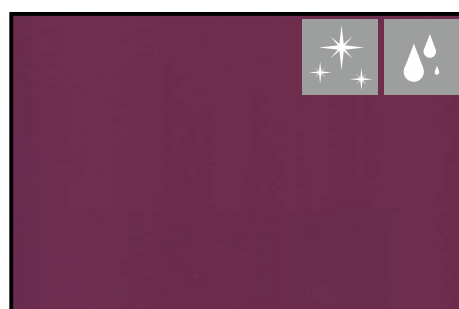
LACOBEL RAL 1164



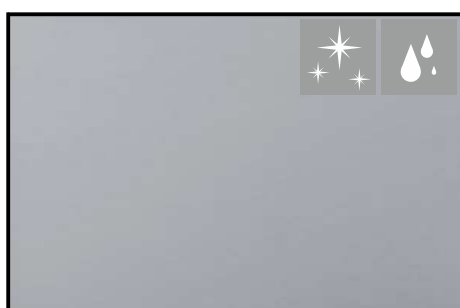
LACOBEL RAL 2001



LACOBEL RAL 1586



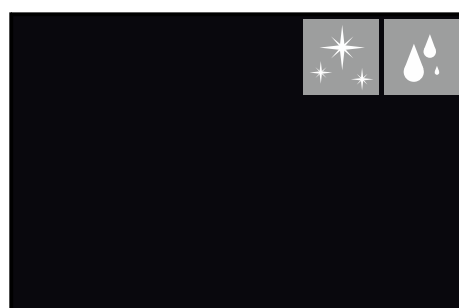
LACOBEL RAL 4006



LACOBEL RAL 9006

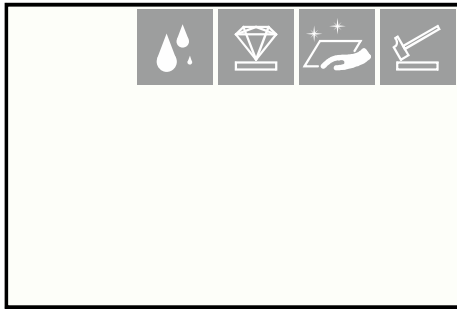


LACOBEL RAL 9007 Metallic

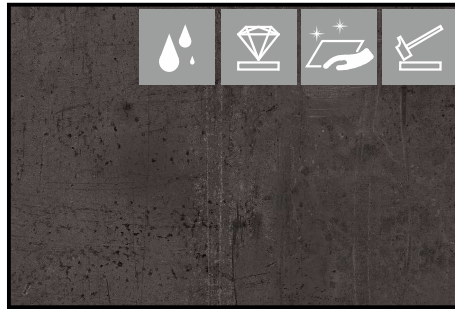


LACOBEL RAL 9005

Compact laminates splashback
zástěny z kompaktních desek



PFLEIDERER U11102 White (white core)



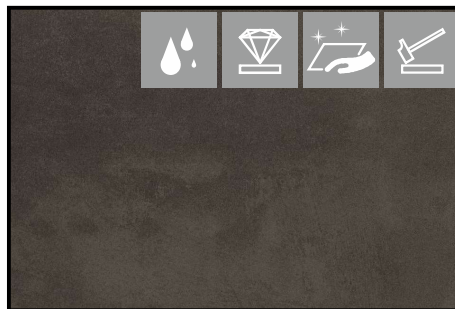
FUNDERMAX 0428 Cave



FUNDERMAX 0794 Patina Bronze



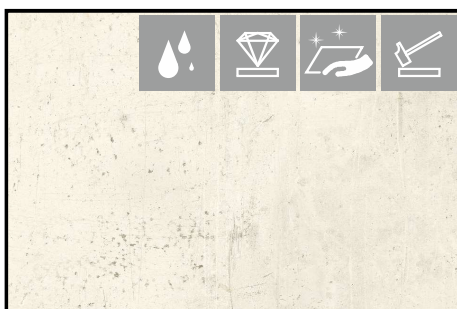
FUNDERMAX 0026 Prado Alu Grey



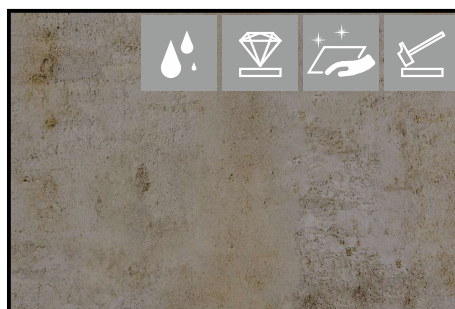
FUNDERMAX 0027 Prado Agate Grey



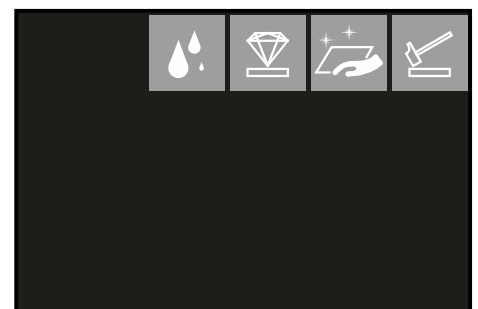
FUNDERMAX 0565 Polaris



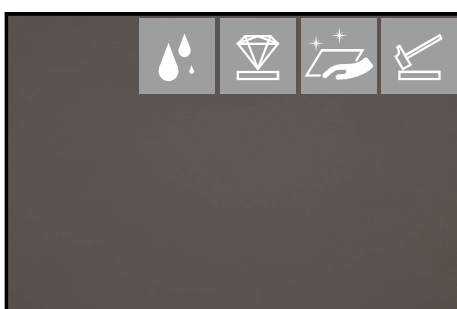
FUNDERMAX 0426 Loft



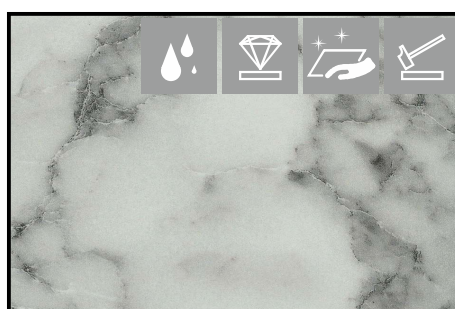
FUNDERMAX 0793 Patina Tin



FUNDERMAX 0080 Black



FENIX 0718 NTM Grigio Londra



PFLEIDERER S63009 Mramor Carrara



EGGER U7081 Light grey



EGGER F206 Pietra Grigia Black



EGGER F186 Beton Chicago Light Grey



PFLEIDERER U11102 White (black core)

TECH aluminium stainless steel finish



order nr.	length
103307190	147 mm
103307023	247 mm
103307192	297 mm
103307026	397 mm
103307027	447 mm
103307028	497 mm
103307030	597 mm

TECH aluminium black finish



order nr.	length
103300487	245 mm
103307989	295 mm
103307990	345 mm
103307991	395 mm
103307992	445 mm
103307993	495 mm
103300488	545 mm
103307994	595 mm

DECOR aluminium stainless steel finish



order nr.	drilling	length
36830	160 mm	168 mm
36831	192 mm	200 mm
36832	224 mm	232 mm
36833	320 mm	328 mm
36834	448 mm	456 mm

DECOR anodized aluminium



order nr.	drilling	length
36822	160 mm	168 mm
36823	192 mm	200 mm
36824	224 mm	232 mm
36825	320 mm	328 mm
36826	448 mm	456 mm

BAR stainless steel
ø 12 mm



order nr.	drilling	length
10641	128 mm	168 mm
10642	160 mm	200 mm
10643	192 mm	232 mm
10644	224 mm	264 mm
10645	288 mm	328 mm
10646	320 mm	360 mm
10647	384 mm	426 mm
10648	448 mm	488 mm
10649	512 mm	554 mm

Handles
úchytky

MARINA stainless steel
12 x 12 mm



order nr.	drilling	length
203829	128 mm	138 mm
203822	160 mm	170 mm
203823	192 mm	202 mm
203824	224 mm	234 mm
203825	320 mm	330 mm
203826	480 mm	490 mm
203827	640 mm	650 mm
203828	736 mm	746 mm

EZIO stainless steel
ø 13 mm



order nr.	drilling	length
103300841	128 mm	141 mm
103300842	160 mm	173 mm
103300843	192 mm	205 mm
103300844	288 mm	301 mm
103300845	320 mm	333 mm
103300846	384 mm	397 mm
103300847	480 mm	493 mm
103300848	736 mm	749 mm

PASARI stainless steel black matt finish
ø 12 mm



order nr.	drilling	length
103303279	128 mm	140 mm
103303280	160 mm	172 mm
103303281	192 mm	204 mm
103303283	256 mm	268 mm
103303284	288 mm	300 mm
103303285	320 mm	332 mm
103303286	352 mm	364 mm
103303287	384 mm	396 mm
103303289	480 mm	492 mm
103303290	640 mm	652 mm
103303291	736 mm	748 mm

ELTH stainless steel
ø 10 mm



order nr.	drilling	length
103301370	128 mm	148 mm
103301371	160 mm	180 mm
103301372	192 mm	212 mm
103301373	288 mm	308 mm
103301374	352 mm	372 mm
103301375	448 mm	468 mm

KRATOS stainless steel
ø 10 mm



order nr.	drilling	length
103315772	128 mm	138 mm
103315773	160 mm	170 mm
103315774	192 mm	202 mm
103315775	224 mm	234 mm
103315776	256 mm	266 mm
103315777	288 mm	298 mm
103315778	320 mm	330 mm

Handles
úchytky

DEFENCE black matt finish



order nr.	drilling	length
356235	160 mm	167 mm
356234	320 mm	327 mm

DEFENCE old gold



order nr.	drilling	length
356233	160 mm	167 mm
356232	320 mm	327 mm

DEFENCE beton efect



order nr.	drilling	length
356237	96 mm	103 mm
356236	160 mm	167 mm

DEFENCE water rusted



order nr.	drilling	length
356239	96 mm	103 mm
356238	160 mm	167 mm

BRERA old bronze



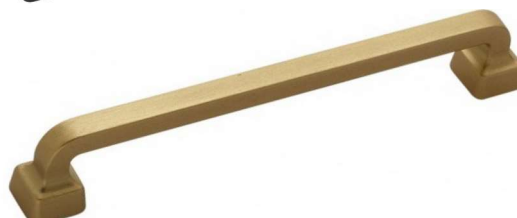
order nr.	drilling	length
356226	96 mm	116 mm
356225	160 mm	180 mm
356224	320 mm	340 mm

BRERA black matt finish



order nr.	drilling	length
356229	96 mm	116 mm
356228	160 mm	180 mm
356227	320 mm	340 mm

BRERA gold brushed



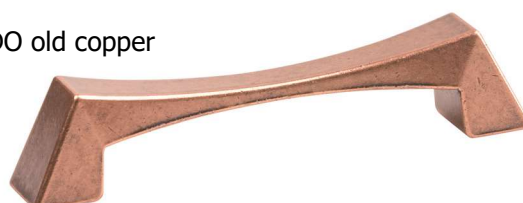
order nr.	drilling	length
405054	96 mm	116 mm
405055	160 mm	180 mm
405056	320 mm	340 mm

CALEIDO old copper



order nr.
284266

CALEIDO old copper



order nr.	drilling	length
284263	128 mm	149 mm
284264	192 mm	213 mm

Handles
úchytky

SIRIUS old tin

order nr.
284270



SIRIUS old tin



order nr.	drilling	length
284267	96 mm	142 mm
284268	128 mm	177 mm
284269	160 mm	210 mm

SIRIUS rust effect

order nr.
356255



SIRIUS rust effect



order nr.	drilling	length
356254	96 mm	142 mm
356253	128 mm	177 mm
356252	160 mm	210 mm

SIRIUS washed stone

order nr.
356251



SIRIUS washed stone



order nr.	drilling	length
356250	96 mm	142 mm
356249	128 mm	177 mm
356248	160 mm	210 mm

ART DECÓ blue washed



order nr.	drilling	length
356274	32 mm	79 mm
356271	64 mm	95 mm

ART DECÓ rust effect



order nr.	drilling	length
356273	32 mm	79 mm
356270	64 mm	95 mm

ART DECÓ washed stone



order nr.	drilling	length
356272	32 mm	79 mm
356269	64 mm	95 mm

CURU old bronze

order nr.
284221



CURU old bronze



order nr.	drilling	length
284222	128 mm	158 mm
284223	192 mm	222 mm

Handles
úchytky

HALTI old copper



order nr.	drilling	length
351832	128 mm	158 mm

HALTI old tin



order nr.	drilling	length
351831	128 mm	158 mm

HALTI old black



order nr.	drilling	length
351829	128 mm	158 mm

DERBY old black



order nr.	drilling	length
202825	128 mm	170 mm

DERBY old tin



order nr.	drilling	length
202827	128 mm	170 mm

SULKY old black



order nr.	drilling	length
202828	128 mm	154 mm

SULKY old tin



order nr.	drilling	length
202830	128 mm	154 mm

KENTUCKY old black



order nr.
351834

KENTUCKY old black



order nr.	drilling	length
202844	160 mm	180 mm
202831	192 mm	212 mm

MELLA gold matt

order nr.
396167



MELLA gold matt



order nr.	drilling	length
396165	160 mm	220 mm

MELLA black matt

order nr.
396166

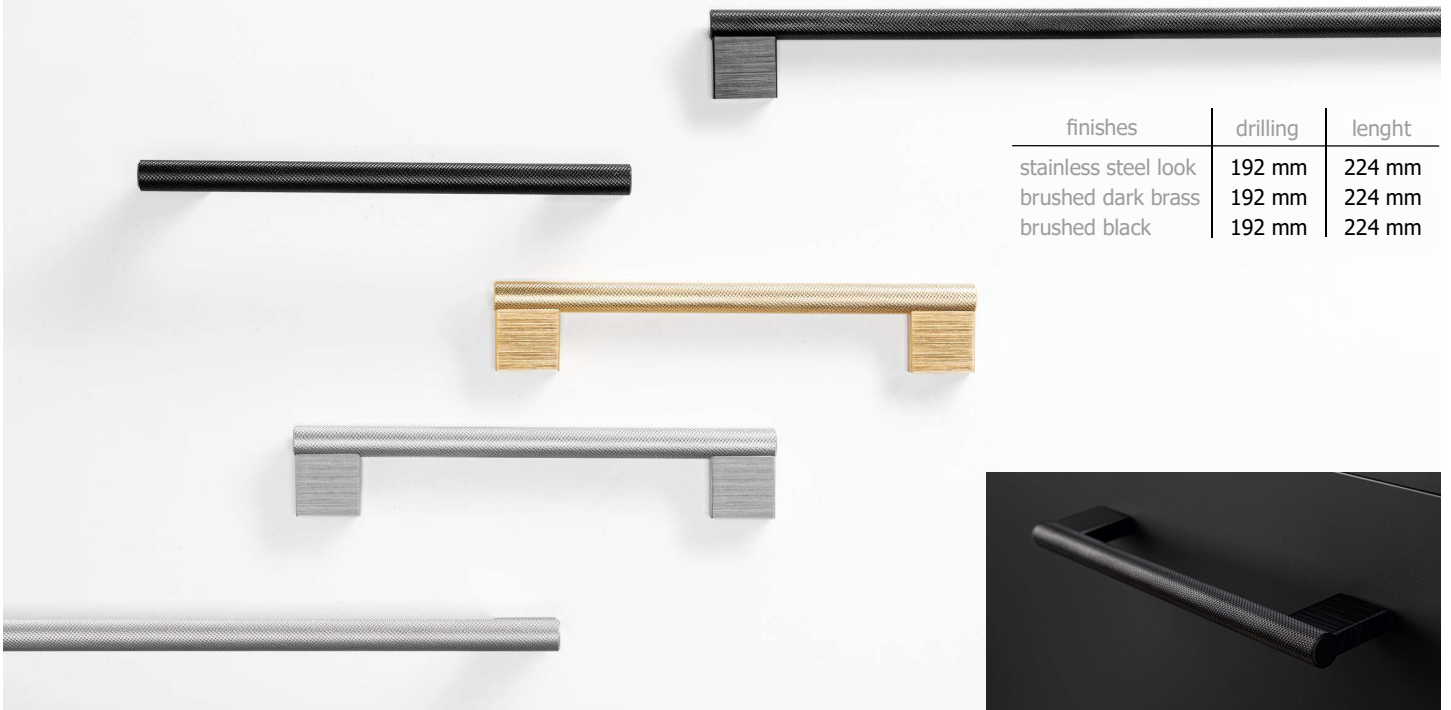


MELLA black matt



order nr.	drilling	length
396164	160 mm	220 mm

GRAF BIG 0486



finishes	drilling	length
stainless steel look	192 mm	224 mm
brushed dark brass	192 mm	224 mm
brushed black	192 mm	224 mm

GRAF BIG knob 0486



finishes	diameter	length	diameter	length
stainless steel look	38 mm	30 mm	50 mm	30 mm
brushed dark brass	38 mm	30 mm	50 mm	30 mm
brushed black	38 mm	30 mm	50 mm	30 mm

GRAF knob 0109



finishes	diameter	length
stainless steel look	17,5 mm	28 mm
brushed dark brass	17,5 mm	28 mm
brushed black	17,5 mm	28 mm

ARPA 0583 - 192



finishes	drilling	length
stainless steel look	192 mm	214 mm
brushed brass	192 mm	214 mm
brushed black	192 mm	214 mm
rustic brass	192 mm	214 mm



ARPA knob 0583 - 022

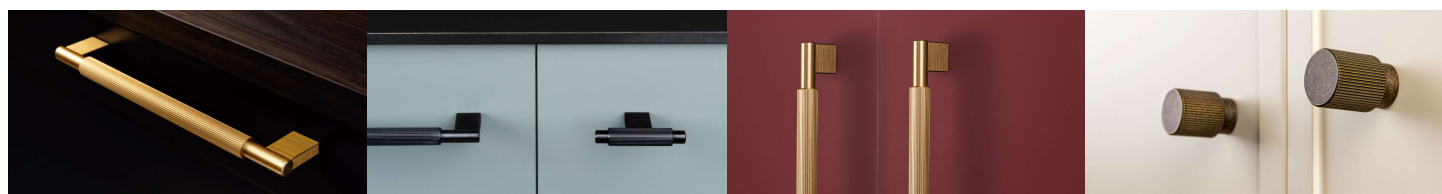


finishes	diameter	length
stainless steel look	22 mm	31 mm
brushed brass	22 mm	31 mm
brushed black	22 mm	31 mm
rustic brass	22 mm	31 mm

ARPA knob 0583 - 70



finishes	diameter	length
stainless steel look	14 mm	70 mm
brushed brass	14 mm	70 mm
brushed black	14 mm	70 mm
rustic brass	14 mm	70 mm

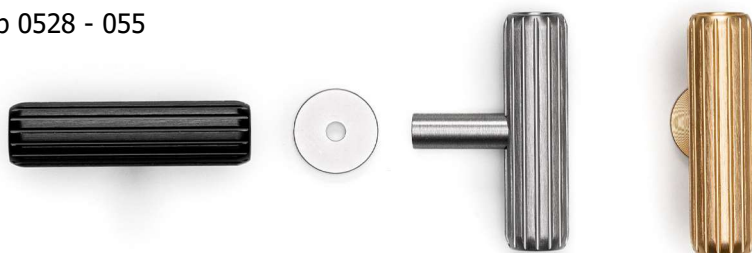


RILLE 0528



finishes	drilling	length
stainless steel look	160 mm	190 mm
brushed dark brass	160 mm	190 mm
brushed black	160 mm	190 mm

RILLE knob 0528 - 055



finishes	diameter	length
stainless steel look	15 mm	55 mm
brushed dark brass	15 mm	55 mm
brushed black	15 mm	55 mm



DENTAL INSERTS 1

Material: plastic

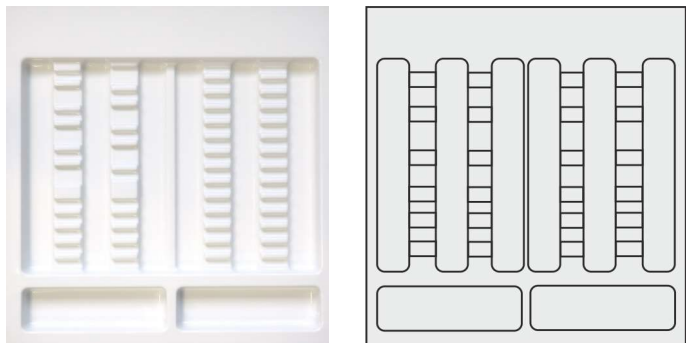
Surface: white laminate with high gloss finish

Thickness: 2,5 mm

28 mm high drawer insert

Size (L x W x H): 422 x 457 x 28 mm

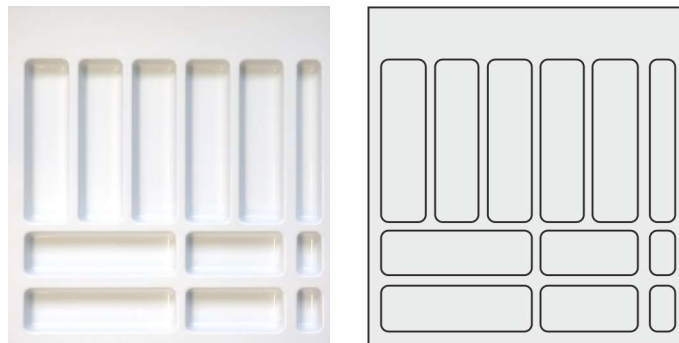
Drawer insert for instrumental, Art.nr.: **ZV1**



28 mm high drawer insert

Size (L x W x H): 422 x 457 x 28 mm

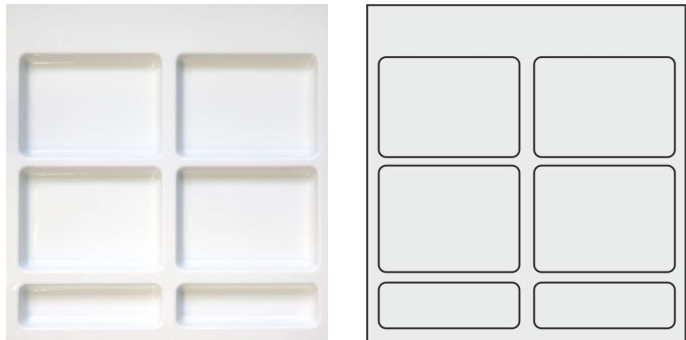
Drawer insert 12 compartments, Art.nr.: **ZV2**



28 mm high drawer insert

Size (L x W x H): 422 x 457 x 28 mm

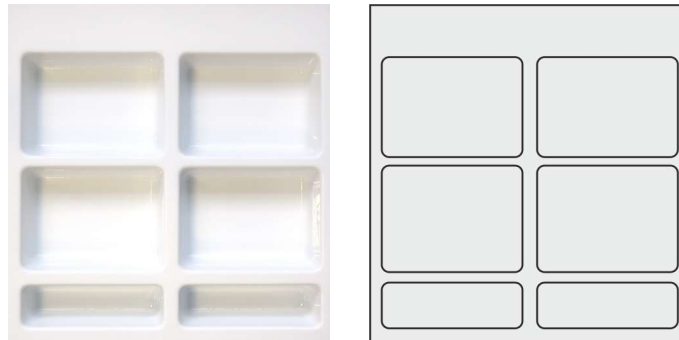
Drawer insert 6 compartments, Art.nr.: **ZV3**



57 mm high drawer insert

Size (L x W x H): 422 x 457 x 57 mm

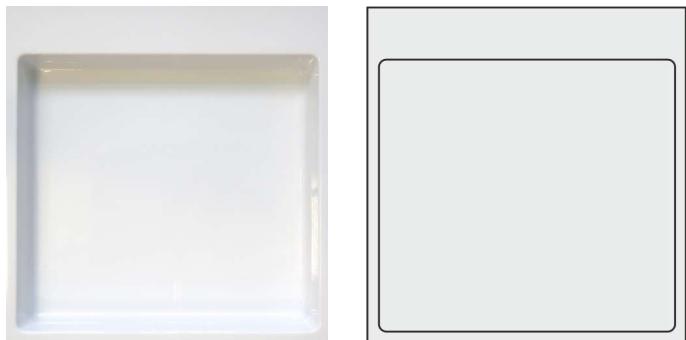
Drawer insert 6 compartments, Art.nr.: **ZV4**



57 mm high drawer insert

Size (L x W x H): 422 x 457 x 57 mm

Drawer insert 1 compartment, Art.nr.: **ZV5**



DENTAL INSERTS 3

Material: plastic

Surface: white laminate with fine grained finish

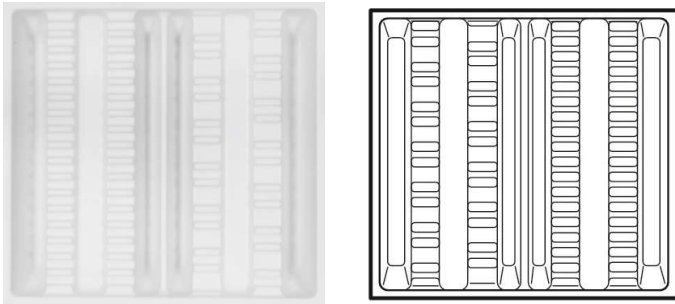
Thickness: 2,5 mm

For metal drawer depth 400 mm

For 59 mm high drawer

Size (L x W x H): 401 x 382 x 56 mm

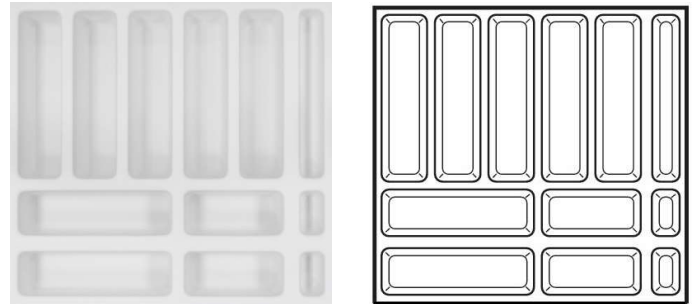
Drawer insert for 30 instruments, Art.nr.: **ZV 740-400**



For 59 mm high drawer

Size (L x W x H): 401 x 382 x 56 mm

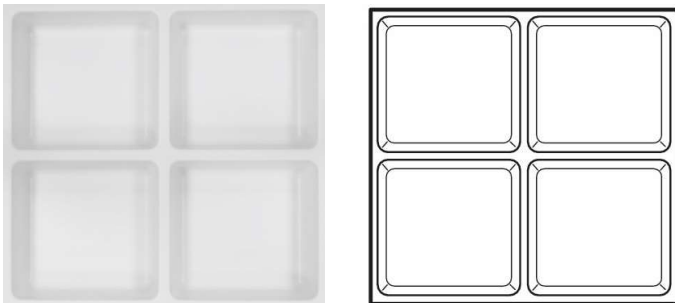
Drawer insert 12 compartments, Art.nr.: **ZV 750-400**



For 59 mm high drawer

Size (L x W x H): 401 x 382 x 56 mm

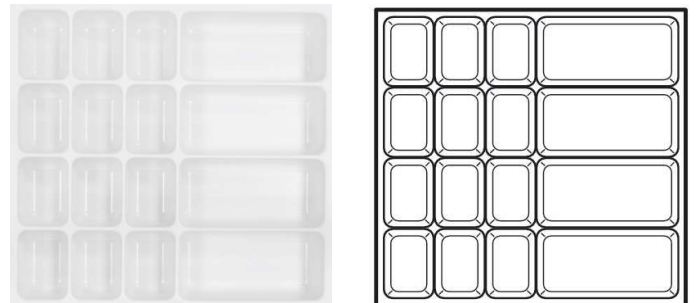
Drawer insert 4 compartments, Art.nr.: **ZV 751-400**



For 59 mm high drawer

Size (L x W x H): 401 x 382 x 56 mm

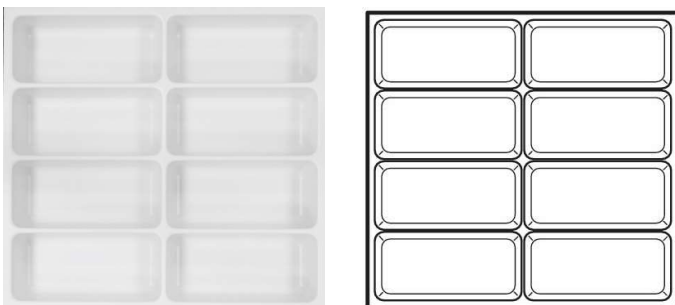
Drawer insert 16 compartments, Art.nr.: **ZV 752-400**



For 59 mm high drawer

Size (L x W x H): 401 x 382 x 56 mm

Drawer insert 8 compartments, Art.nr.: **ZV 753-400**



DENTAL INSERTS 3

Dental inserts
zásuvkové vložky

Material: plastic

Surface: white laminate with fine grained finish

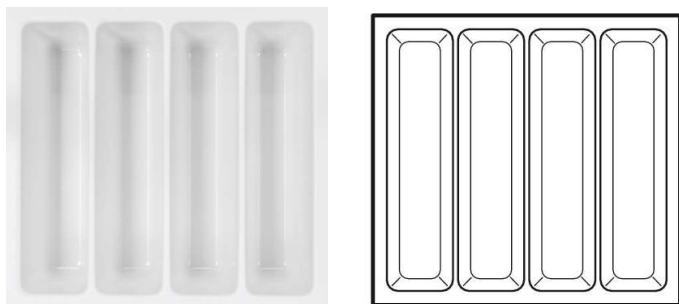
Thickness: 2,5 mm

For metal drawer depth 400 mm

For 120 mm high drawer

Size (L x W x H): 401 x 382 x 117 mm

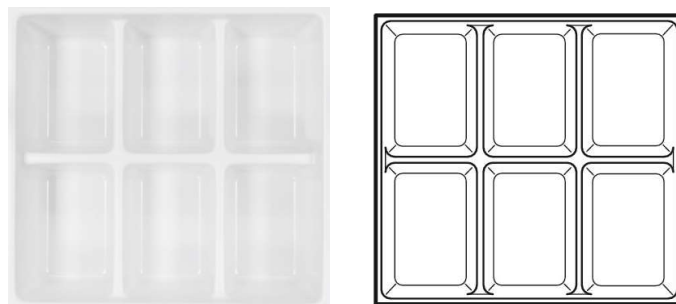
Drawer insert 4 compartment, Art.nr.: **ZV 741-400**



For 120 mm high drawer

Size (L x W x H): 401 x 382 x 117 mm

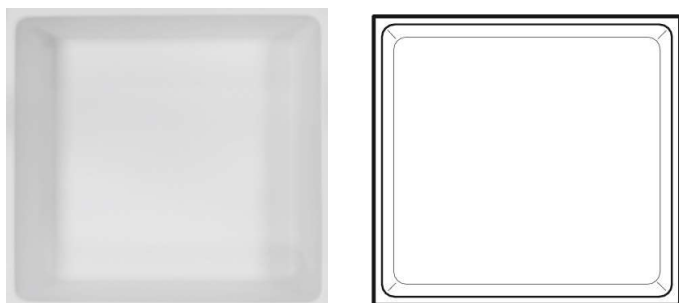
Drawer insert 6 compartments, Art.nr.: **ZV 742-400**



For 120 mm high drawer

Size (L x W x H): 401 x 382 x 117 mm

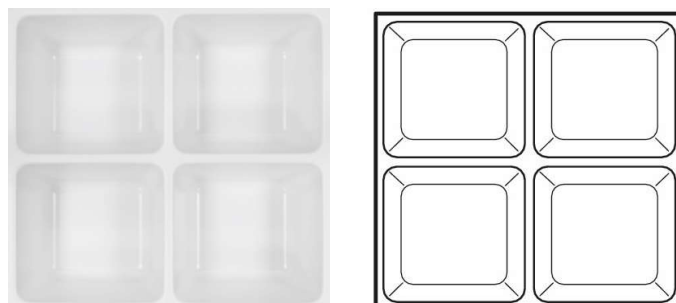
Drawer insert 1 compartment, Art.nr.: **ZV 743-400**



For 120 mm high drawer

Size (L x W x H): 401 x 382 x 117 mm

Drawer insert 4 compartments, Art.nr.: **ZV 755-400**



DENTAL INSERTS 4

Dental inserts
zásuvkové vložky

Material: plastic

Surface: white laminate with fine grained finish

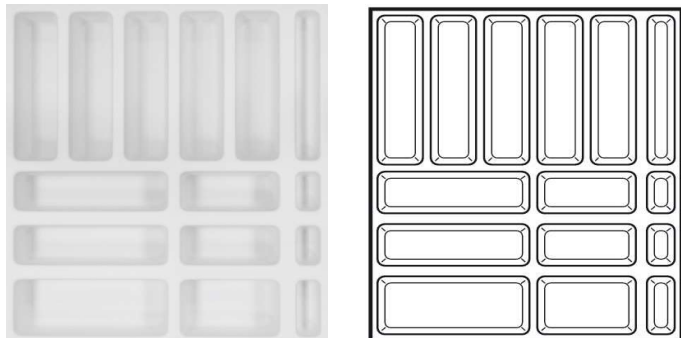
Thickness: 2,5 mm

For metal drawer depth 500 mm

For 59 mm high drawer

Size (L x W x H): 401 x 482 x 56 mm

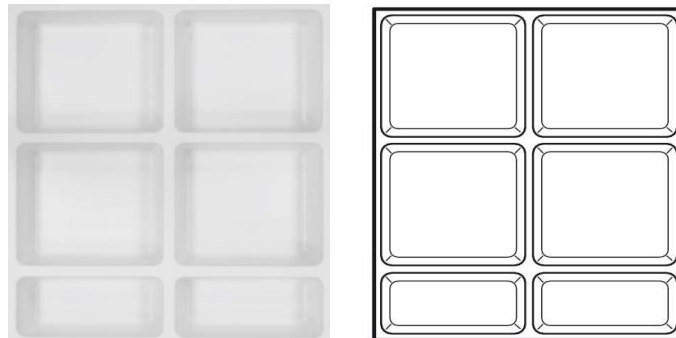
Drawer insert 15 compartments, Art.nr.: **ZV 750-500**



For 59 mm high drawer

Size (L x W x H): 401 x 482 x 56 mm

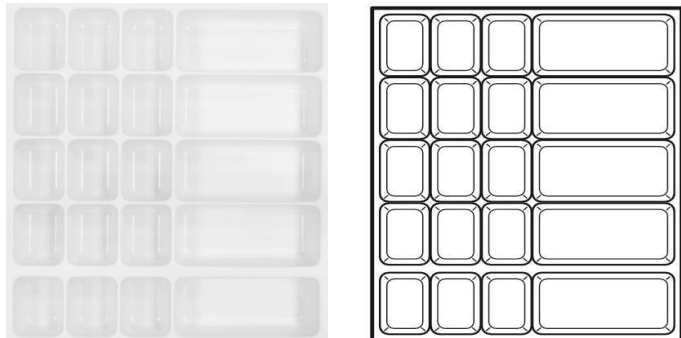
Drawer insert 6 compartments, Art.nr.: **ZV 751-500**



For 59 mm high drawer

Size (L x W x H): 401 x 482 x 56 mm

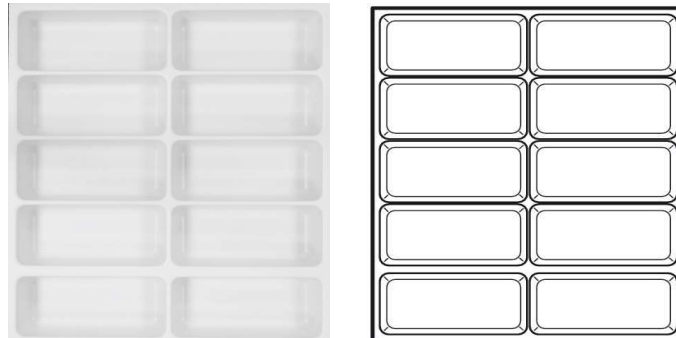
Drawer insert 20 compartments, Art.nr.: **ZV 752-500**



For 59 mm high drawer

Size (L x W x H): 401 x 482 x 56 mm

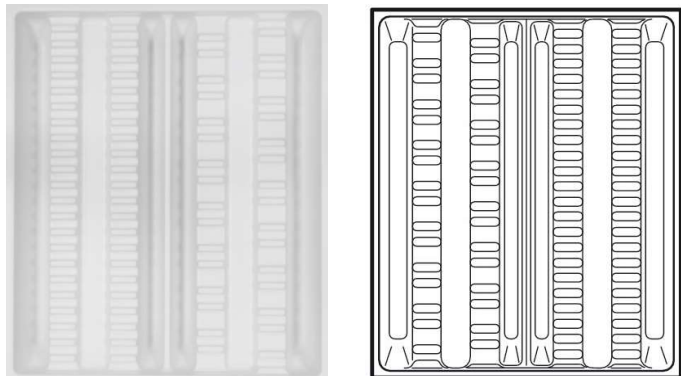
Drawer insert 10 compartments, Art.nr.: **ZV 753-500**



For 59 mm high drawer

Size (L x W x H): 401 x 482 x 56 mm

Drawer insert for 40 instruments, Art.nr.: **ZV 754-500**



DENTAL INSERTS 4

Dental inserts
zásuvkové vložky

Material: plastic

Surface: white laminate with fine grained finish

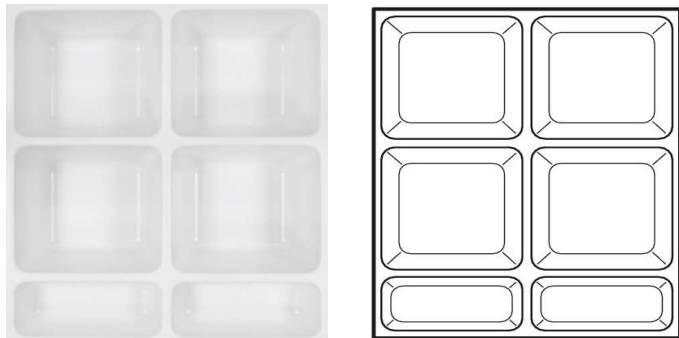
Thickness: 2,5 mm

For metal drawer depth 500 mm

For 120 mm high drawer

Size (L x W x H): 401 x 482 x 117 mm

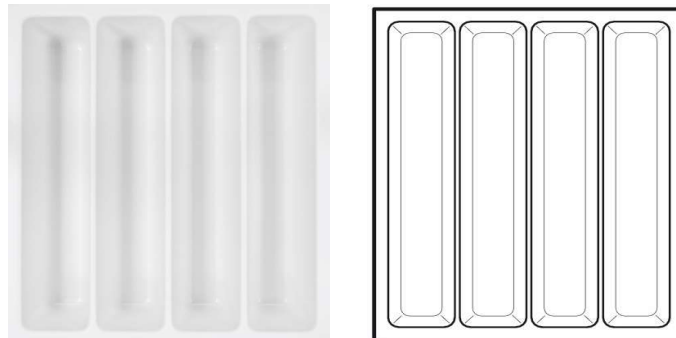
Drawer insert 6 compartments, Art.nr.: **ZV 755-500**



For 120 mm high drawer

Size (L x W x H): 401 x 482 x 117 mm

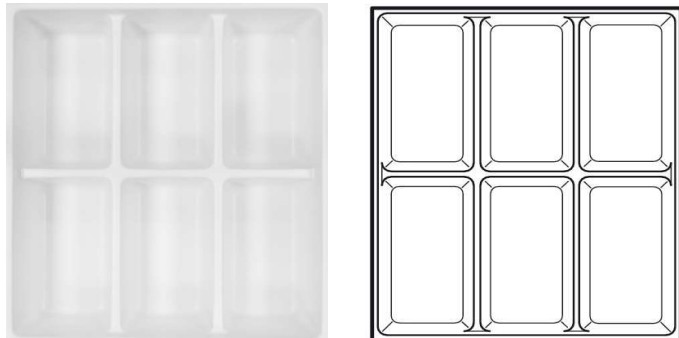
Drawer insert 4 compartments, Art.nr.: **ZV 756-500**



For 120 mm high drawer

Size (L x W x H): 401 x 482 x 117 mm

Drawer insert 6 compartments, Art.nr.: **ZV 757-500**



For 120 mm high drawer

Size (L x W x H): 401 x 482 x 117 mm

Drawer insert 1 compartment, Art.nr.: **ZV 758-500**

